

school dental service



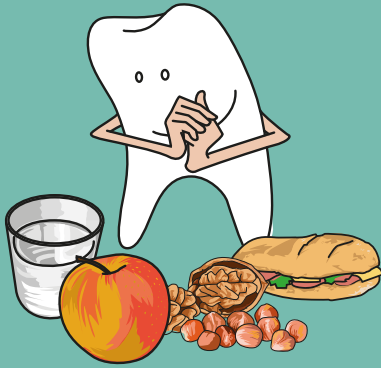
Office de l'enfance et de la jeunesse



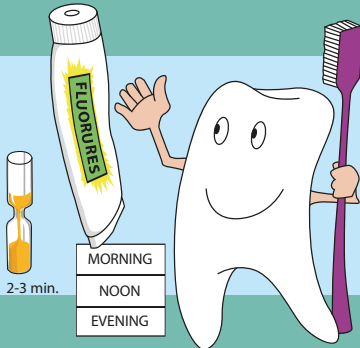
REPUBLIQUE
ET CANTON
DE GENEVE

POST TENEBAJ LUX

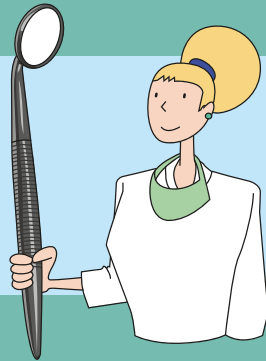
TIPS TO KEEP YOUR TEETH HEALTHY



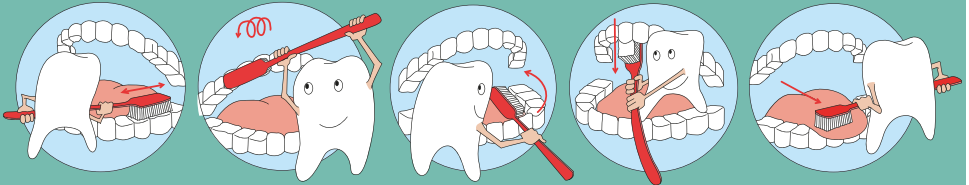
Choose sugar-free snacks.



Always brush your teeth after every meal.
Use fluoride toothpaste to protect and fortify your tooth enamel.



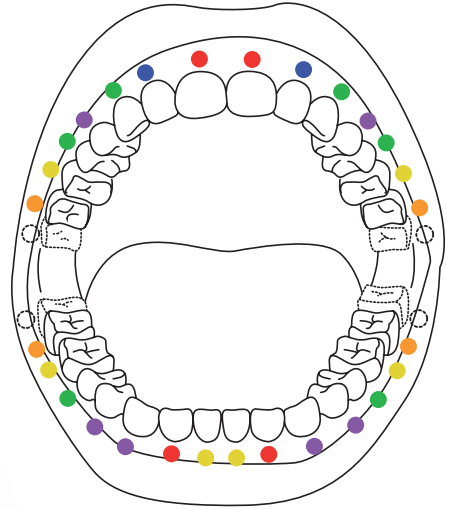
Have a dentist check your teeth once a year.



Brush your teeth correctly.
Brush your tongue at the end, then spit without rinsing.

CHANGES IN DENTITION

- 6 Years** 2 lower incisors
4 large molars
(without loss of teeth)
- 7 years** 2 upper incisors and
2 lower incisors
- 8 years** 2 upper incisors
- 10 years** 2 inferior canines and
4 premolars
- 11 years** 2 upper canines and
4 premolars
- 12 years** 4 large molars
- 18 years** 4 wisdom teeth



My decision: From today forward, I will:

school dental service **local dental practices**

Section d'orthodontie

Rue des Glacis-de-Rive 11
1207 Genève
T. +41 22 546 42 06

Acacias

Rue de la Gabelle 9
1227 Carouge
T. +41 22 388 77 45
sds.acacias@etat.ge.ch

Clair-Bois*

Chemin Henri-Baumgartner 5
1234 Vessy
T. +41 22 388 77 50
sds.clair-bois@etat.ge.ch

Eaux-Vives

Rue du Clos 20
1207 Genève
T. +41 22 388 77 60
sds.eaux-vives@etat.ge.ch

** reserved to handicapped
children*

Franchises

Ecole des Franchises
Route des Franchises 54
1203 Genève
T. +41 22 388 77 55
sds.franchises@etat.ge.ch

Grand-Saconnex

Ecole La Tour-Bloc «B»
Chemin du Pommier 15
1218 Grand-Saconnex
T. +41 22 388 77 88
sds.grand-saconnex@etat.ge.ch

Lancy

Ecole en Sauvy
Avenue Curé-Baud 40
1212 Grand-Lancy
T. +41 22 388 77 37
sds.lancy@etat.ge.ch

Libellules

Ecole des Libellules
Route de l'Usine-à-Gaz 16
1219 Le Lignon
T. +41 22 388 77 52
sds.libellules@etat.ge.ch

Meyrin

Rue de la Prulay 19
1217 Meyrin
T. +41 22 388 77 40
sds.meyrin@etat.ge.ch

Onex

Ecole du Bosson
Av. Bois-de-la-Chapelle 90
1213 Onex
T. +41 22 388 77 33
sds.onex@etat.ge.ch

Pâquis

Ecole de Pâquis-Centre
Rue de Berne 50
1201 Genève
T. +41 22 388 77 81
sds.paquis@etat.ge.ch

Thônex

Ecole Adrien-Jeandin
Av. Adrien-Jeandin 7
1226 Thônex
T. 022 388 77 25
sds.thonex@etat.ge.ch

Mobile dental practice 1: T. +41 79 321 13 37

Mobile dental practice 2: T. +41 79 321 13 36