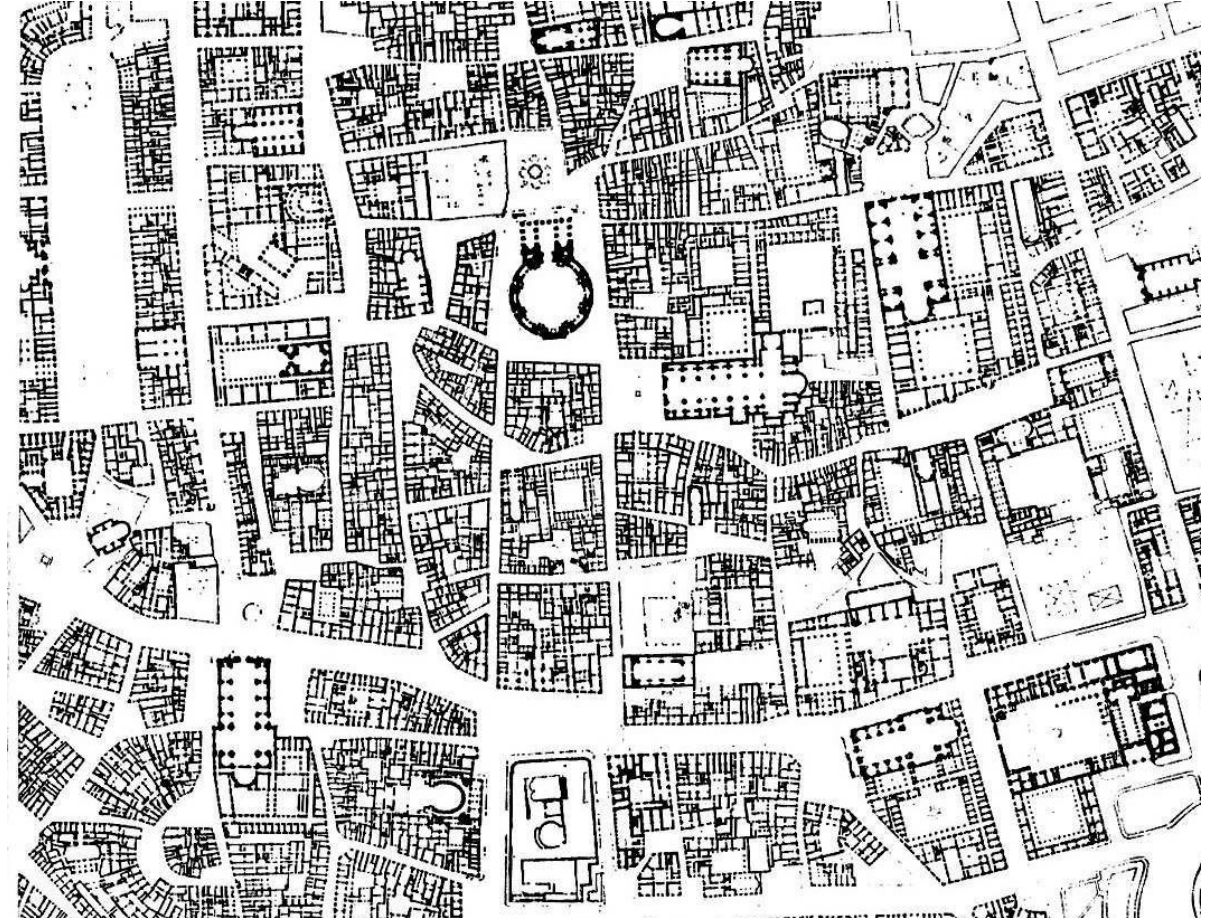


720 pièces



Plan de Noli
Rome, 1748.



Plan de Muratori
Rome, 1963.

Habitat et société

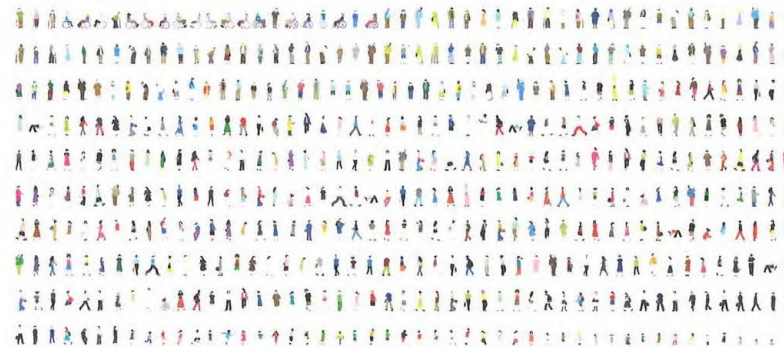
1960 Prinzip „Ein Haus = eine Familie“
Das von der japanischen Regierung geforderte Modell basiert auf dem Einfamilienhaus.
Personen pro Haushalt in Tokio: 4,0. Anteil der über 65-Jährigen: 10%



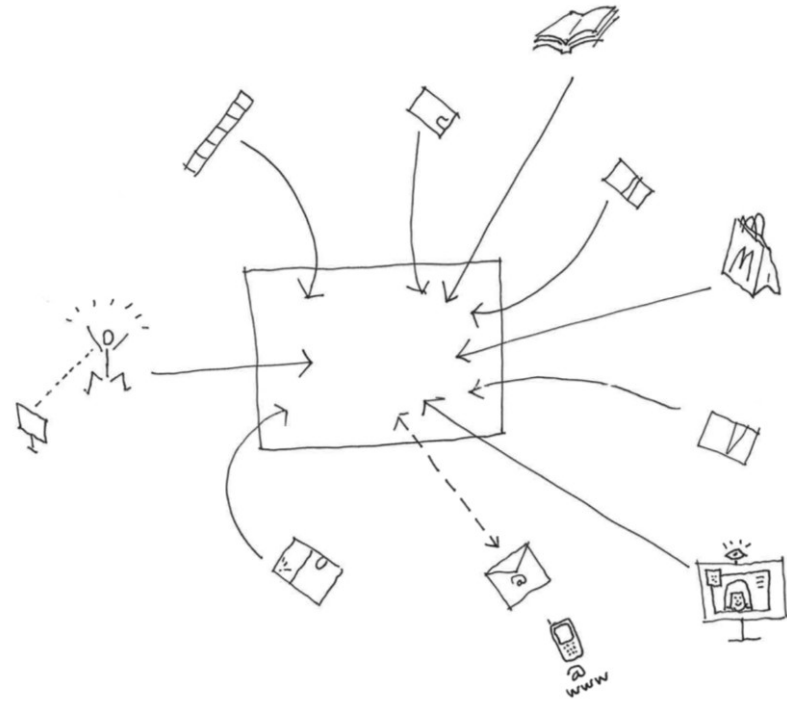
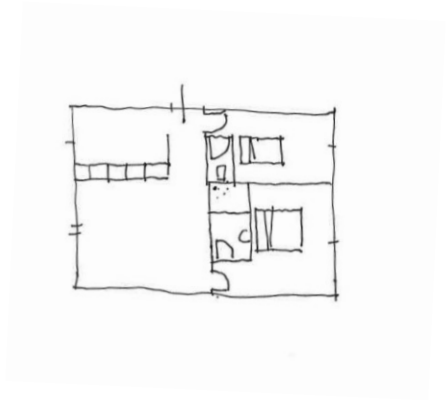
2011 Das Prinzip „Ein Haus = eine Familie“ ist dysfunktional geworden.
Personen pro Haushalt in Tokio: 2,0. Anteil der über 65-Jährigen: 23%



2015 Prinzip: Local Community Area
Eine Einheit zählt etwa 500 Personen.
Personen pro Haushalt in Tokio: 1,9. Anteil der über 65-Jährigen: 27%



Habitat et espace



La maison comme une ville

1960

2020

Habitat et environnement

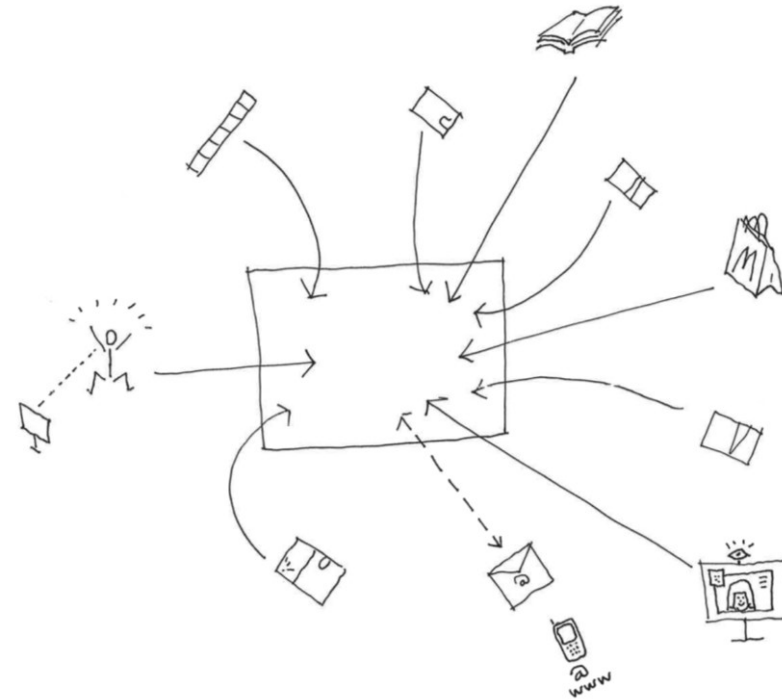
1960 Prinzip „Ein Haus = eine Familie“
Das von der japanischen Regierung geforderte Modell basiert auf dem Einfamilienhaus.
Personen pro Haushalt in Tokio: 4,0. Anteil der über 65-Jährigen: 10%



2011 Das Prinzip „Ein Haus = eine Familie“ ist dysfunktional geworden.
Personen pro Haushalt in Tokio: 2,0. Anteil der über 65-Jährigen: 23%



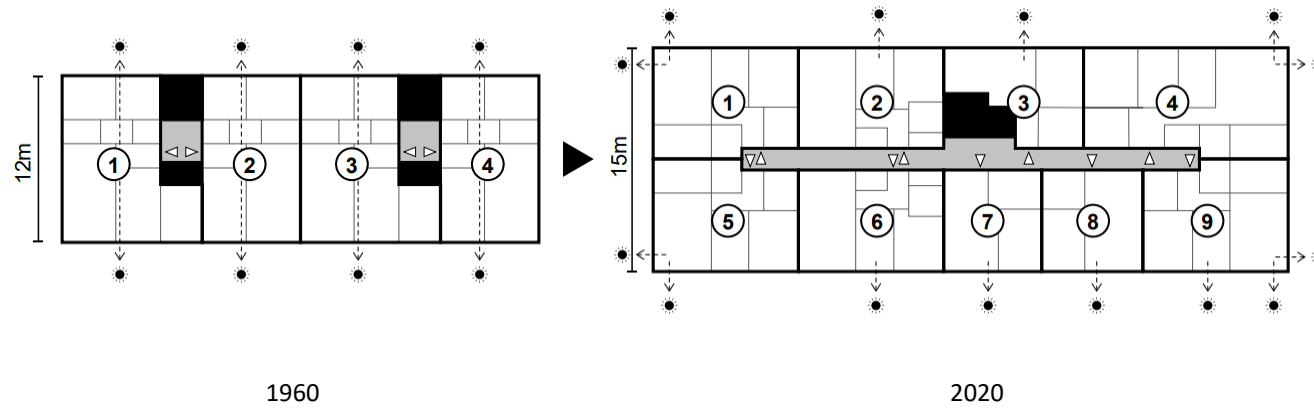
2015 Prinzip: Local Community Area
Eine Einheit zählt etwa 500 Personen.
Personen pro Haushalt in Tokio: 1,9. Anteil der über 65-Jährigen: 27%



La construction est responsable de 40%
des émission de Gaz à effet de serre
(28% construction / 12% exploitation)

La majeure partie de la matière urbaine
est composée de logements.

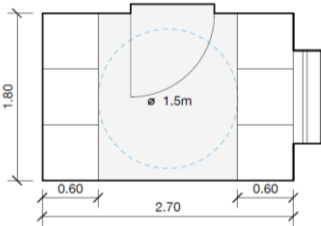
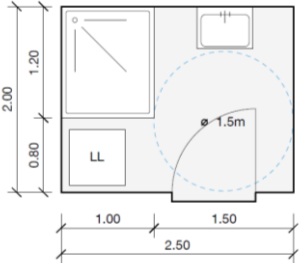
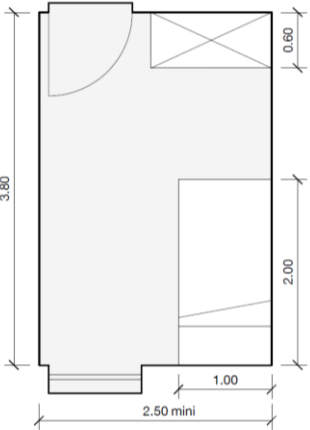
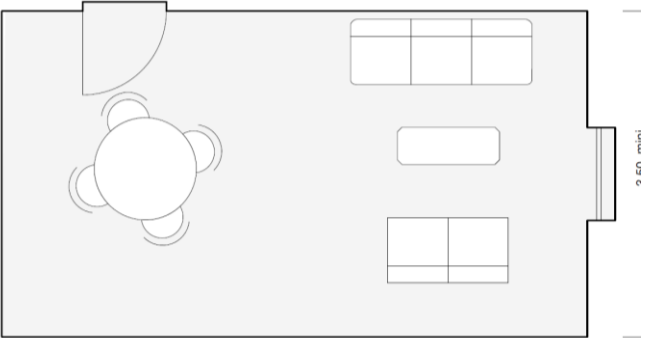
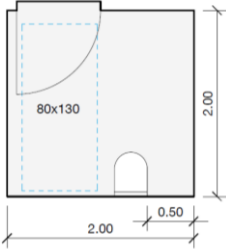
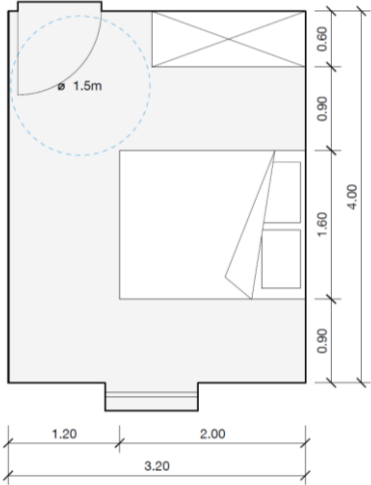
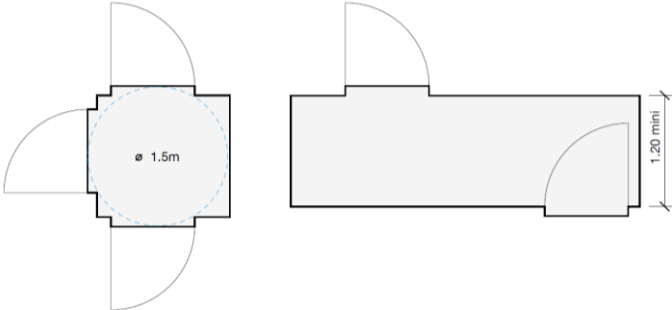
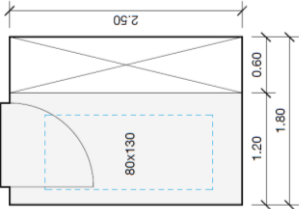
Habitat et standards



Habitat et standards

1 séjour.....	22 m ²
1 cuisine.....	6 m ²
1 chambre d'enfant.....	9 m ²
1 chambre adulte.....	12 m ²
1 wc.....	4 m ²
1 salle de bain	5 m ²
Hall et/ou circulation	6 m ² (max)
	<hr/>
	64m ² intérieur
	+
	9m ² extérieur

Habitat et standards



195 logements

720 pièces

Nantes - FR
55 logements

165 habitants

220 pièces de 16m²

1 logement : 4 pièces

1 pièce : 4 m x 4 m

1

Dijon - FR
40 logements

120 habitants

200 pièces de 13 m²

1 logement : 5 pièces

1 pièce : 3,6 m x 3,6 m

2

Munich - DE
100 logements

300 habitants

300 pièces de 20 m²

1 logement : 3 pièces

1 pièce : 3,6 m x 5,5 m

3

55 logements

220 pièces

1

Nantes - FR
55 logements

165 habitants

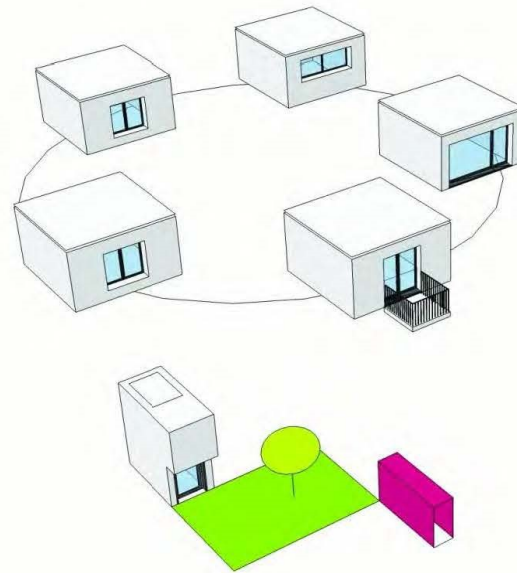
220 pièces de 16m²

1 logement : 4 pièces

1 pièce : 4 m x 4 m

1

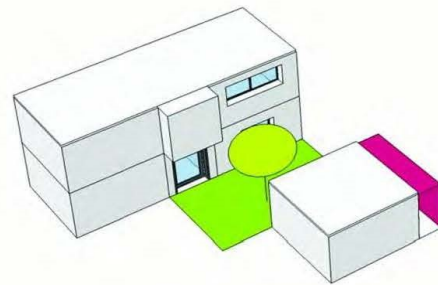
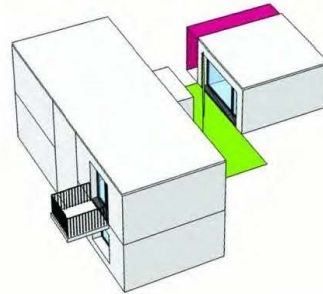
**une collection de pieces
de taille identiques
+
un jardin par lequel on
entre
+
un bloc vertical
avec les fluides**



LES PIECES

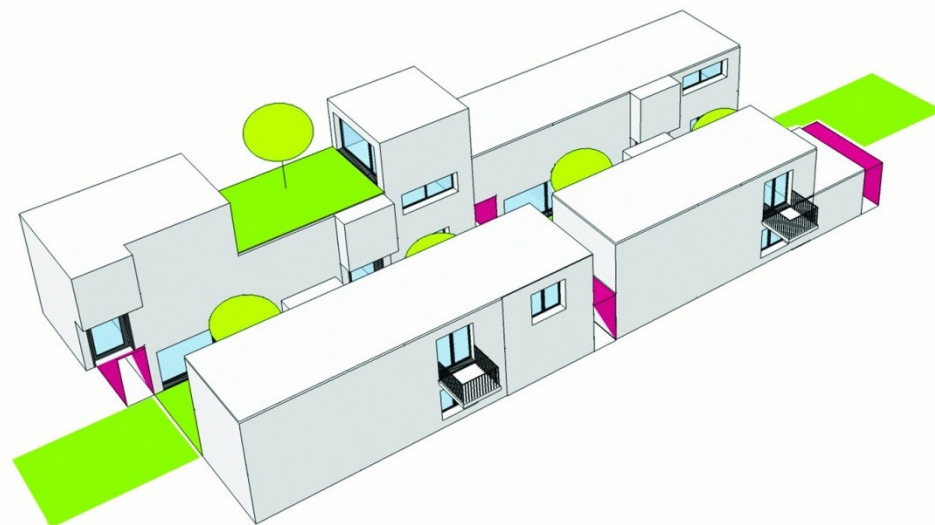
**les pieces organisent un
jardin intime**

**L'une des pieces est
située de l'autre coté du
jardin**

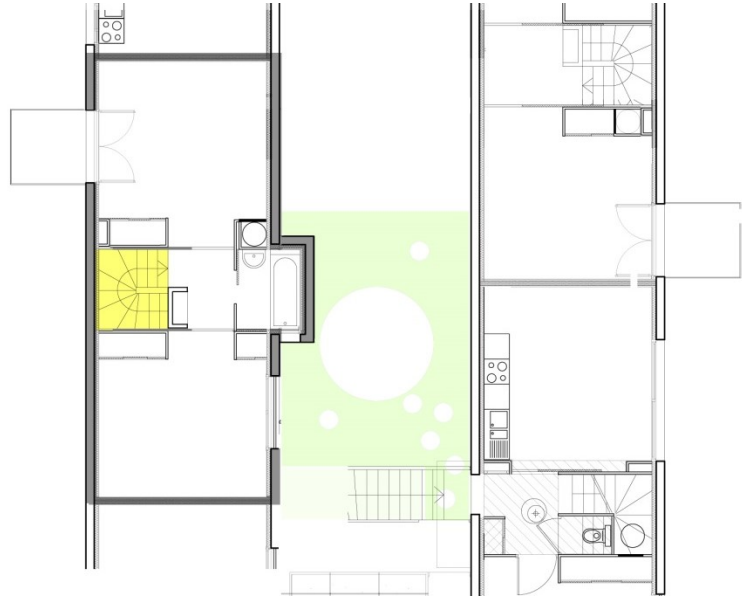
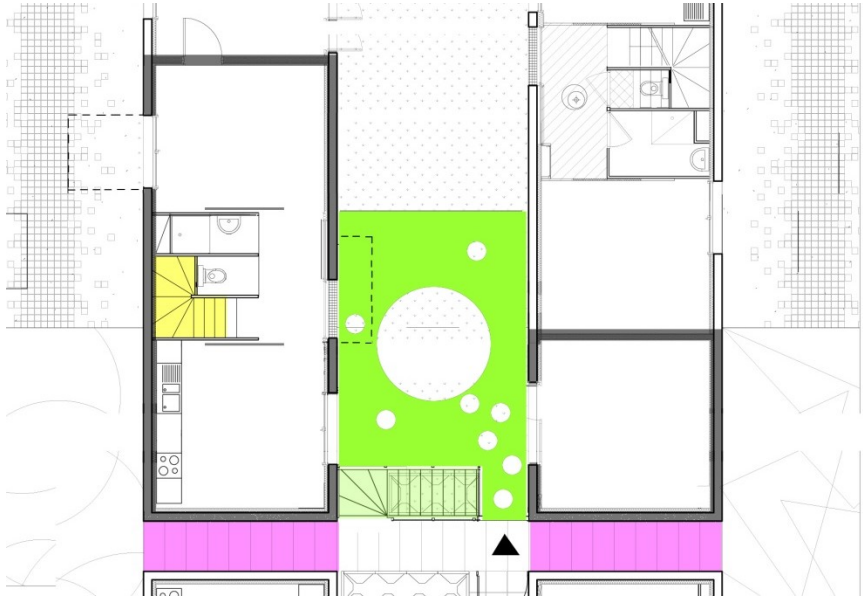


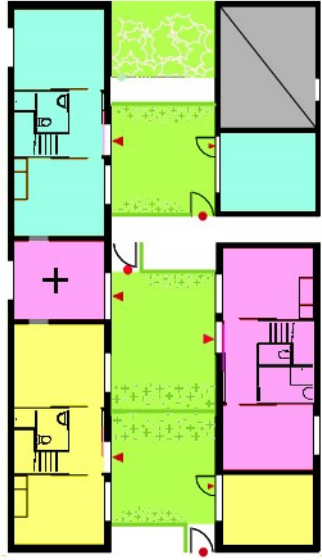
LE LOGEMENT

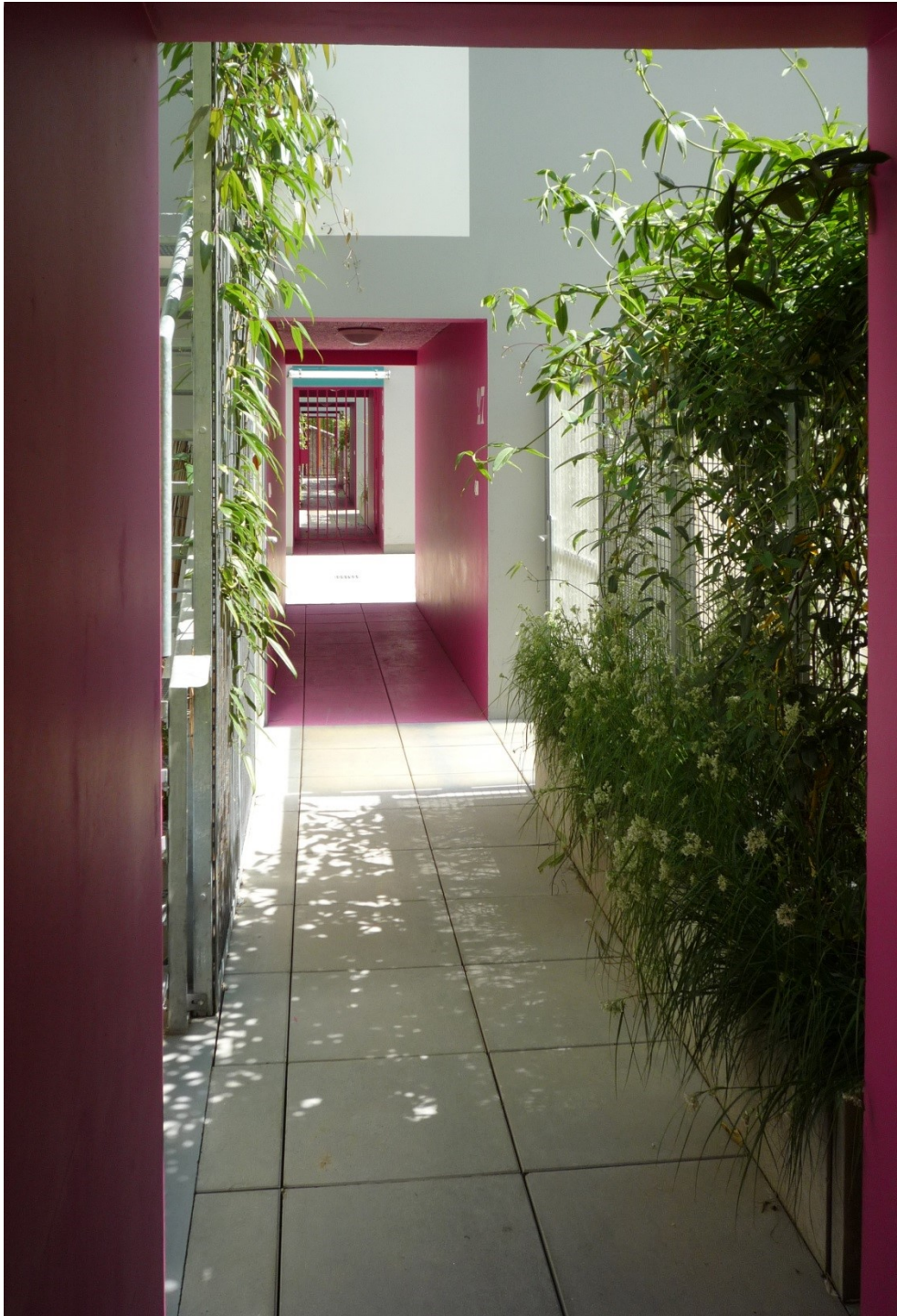
**Les logements
s'entremellent en préser-
vant l'intimité des jardins
intimes**



L'ENSEMBLE URBAIN















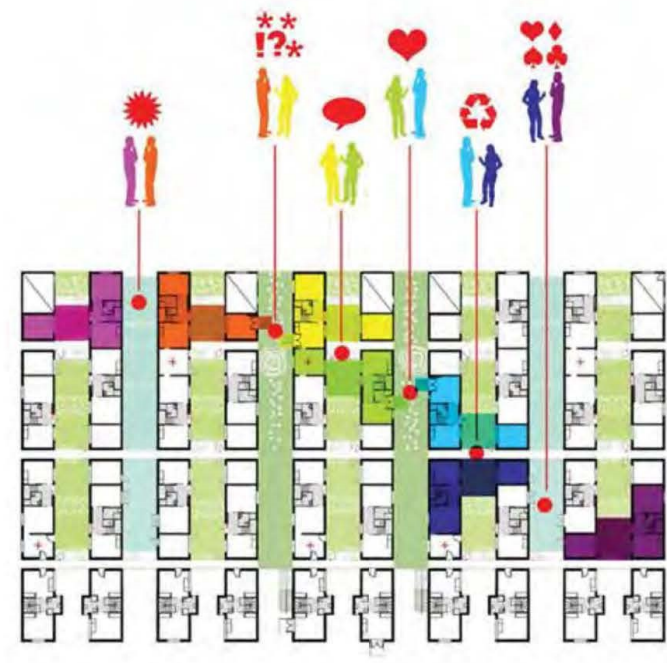




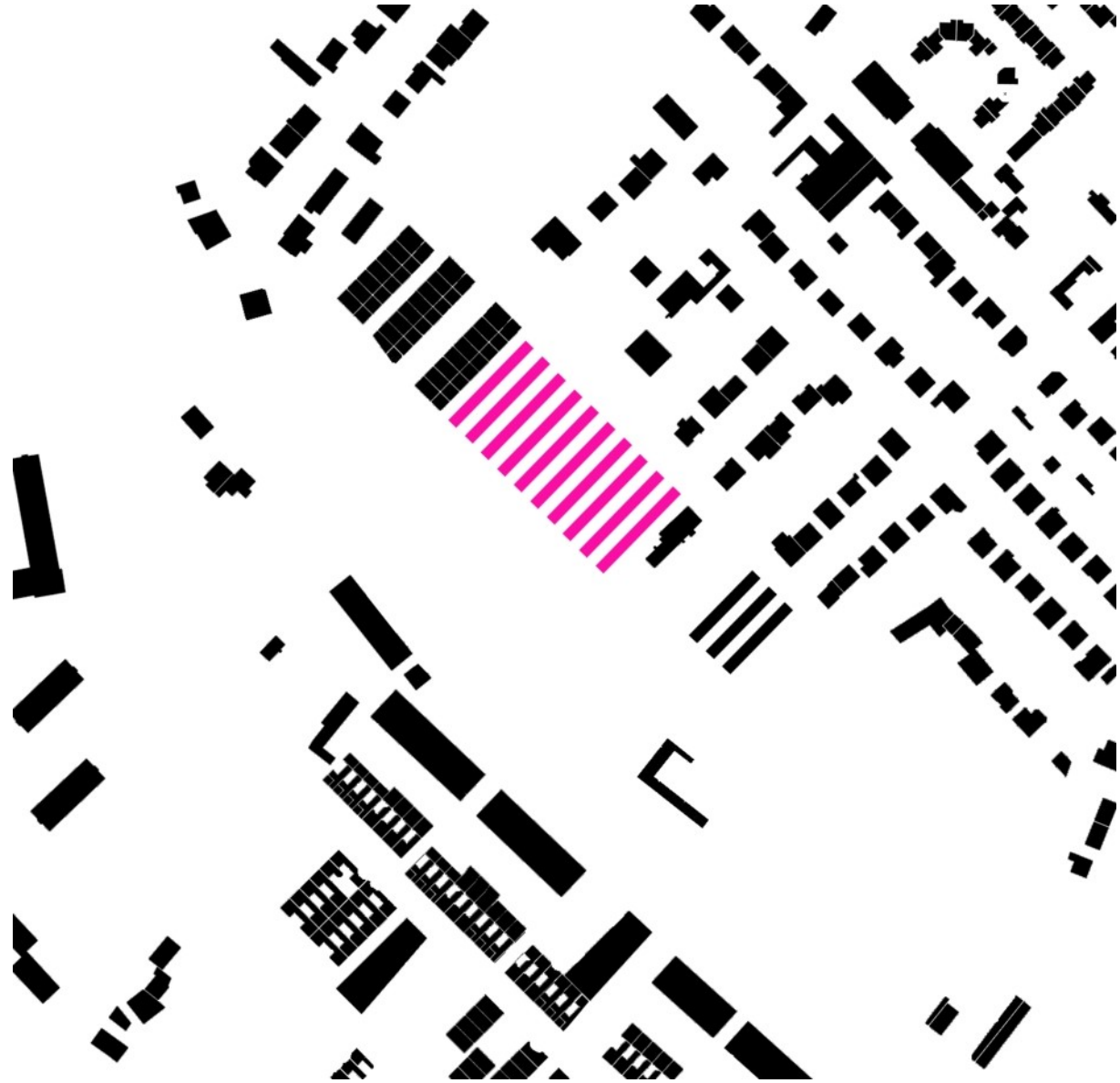
















40 logements

200 pièces

2

Dijon - FR
40 logements

120 habitants

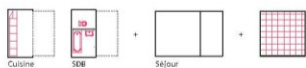
200 pièces de 13 m²

1 logement : 5 pièces

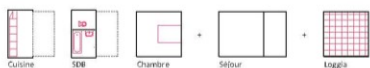
1 pièce : 3,6 m x 3,6 m



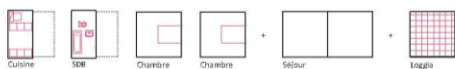
L'unité = une pièce de carrée
13m² dont l'usage est libre



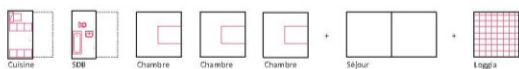
T1 = 32 m²
2,5 pièces



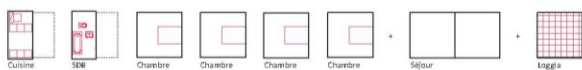
T2 = 45 m²
3,5 pièces + 1 loggia



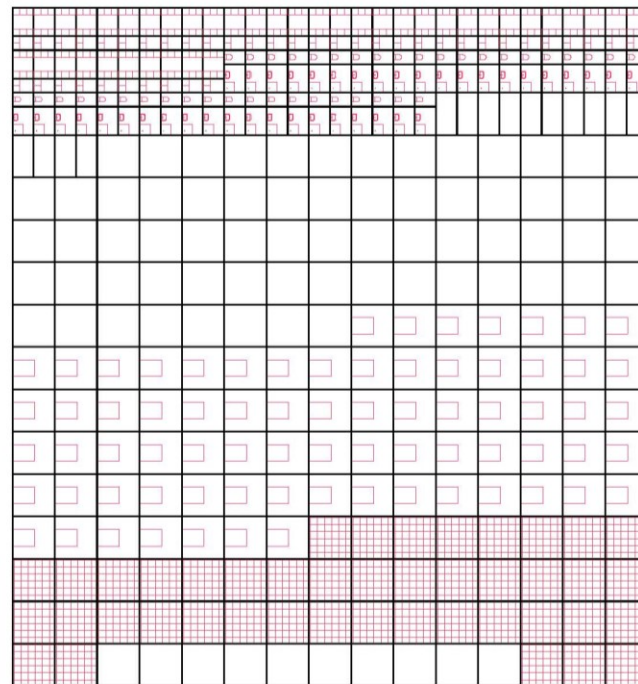
T3 = 65 m²
5 pièces + 1 loggia



T4 = 78 m²
6 pièces + 1 loggia



T5 = 91 m²
7 pièces + 1 loggia



40 cuisines

40 salles de bain

40 salles à manger

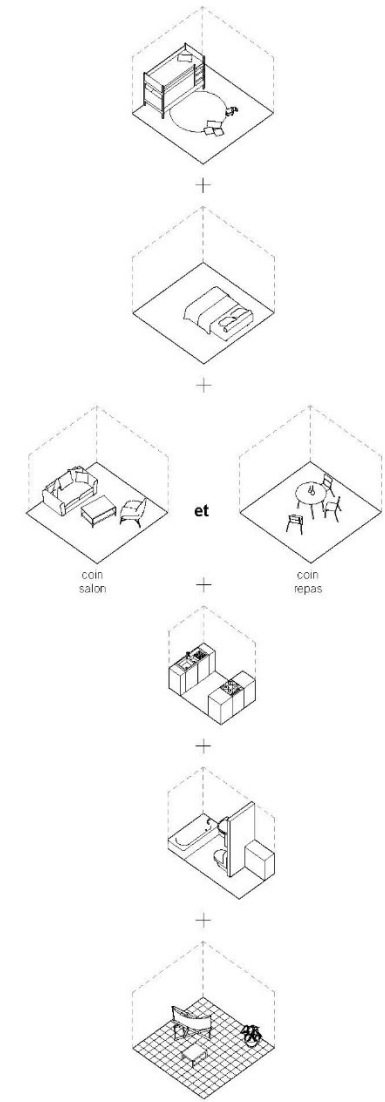
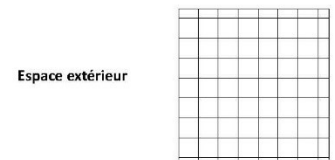
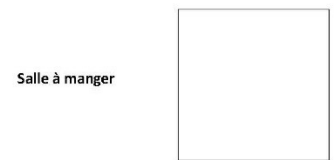
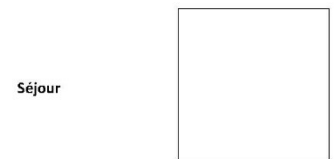
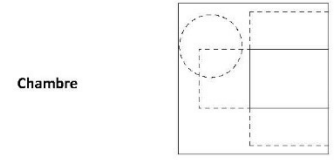
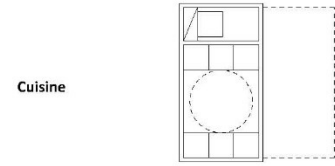
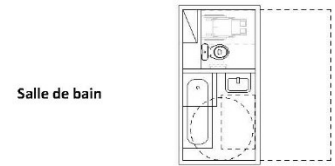
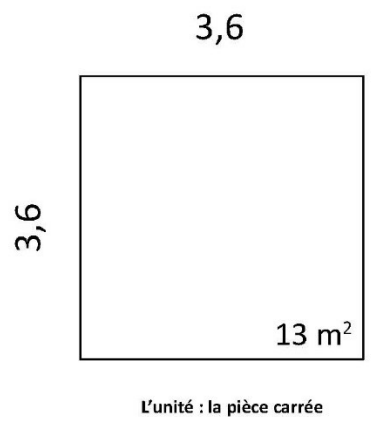
40 pièces de séjour

74 chambres

40 pièces
extérieures

1 espace partagé
et sa terrasse

Conversion du programme en pièces :
240 pièces dont 43 pièces extérieures
pour 2 T1, 12 T2, 16 T3, 10 T4 modulables et un espace partagé

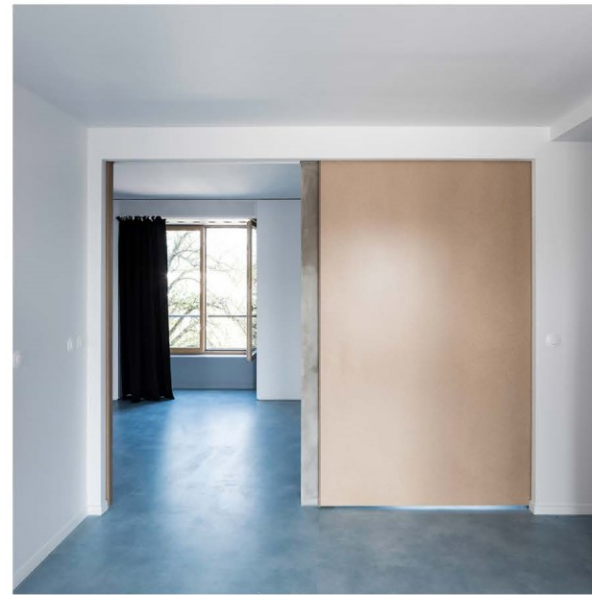
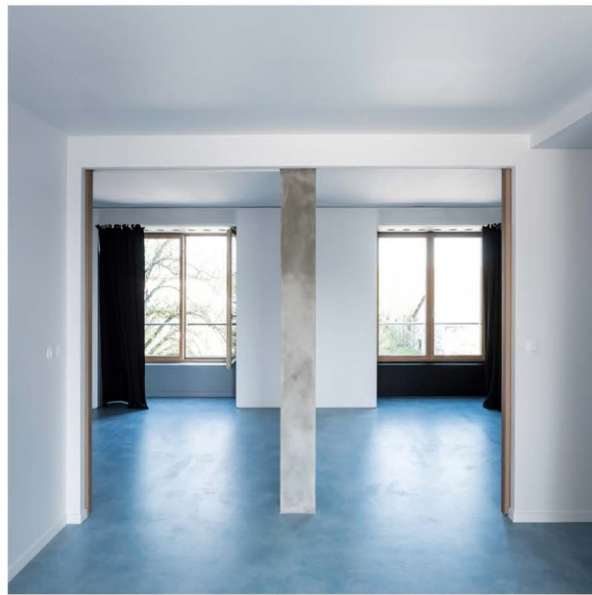


Protocole

PLAN TYPE



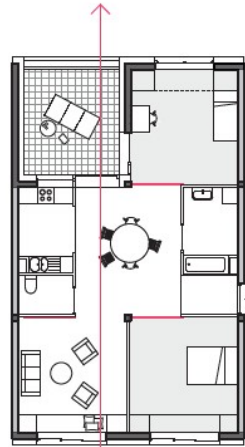
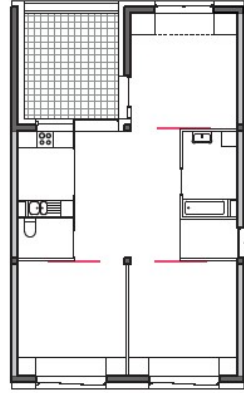
Interprétation



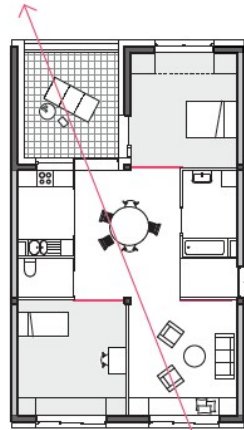
évolutivités



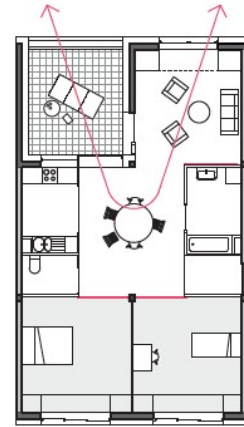




configuration
transversante

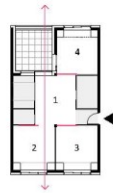


configuration
diagonale



configuration
groupée

Interprétation



Configuration
transversante

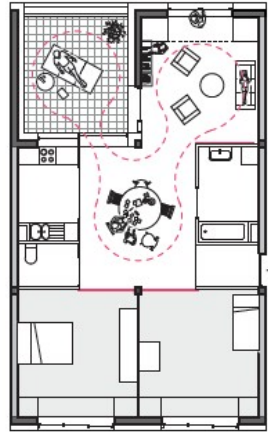


Configuration
diagonale

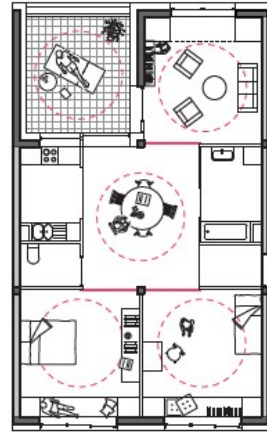


Configuration
groupée

Interprétation



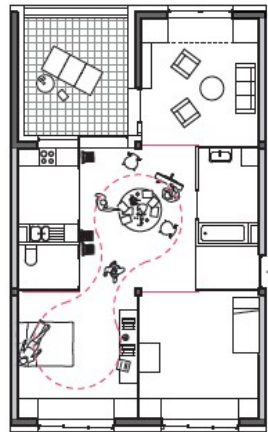
Double-séjour et loggia



5 séjours isolés



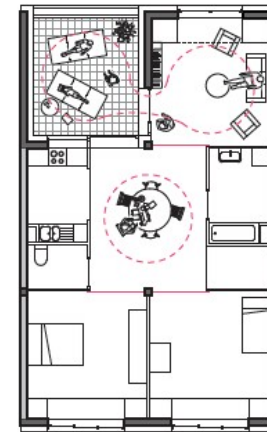
Un espace ouvert



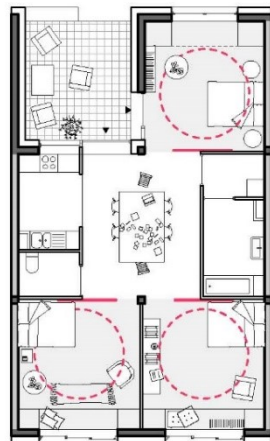
Déploiement du séjour
dans la chambre parentale



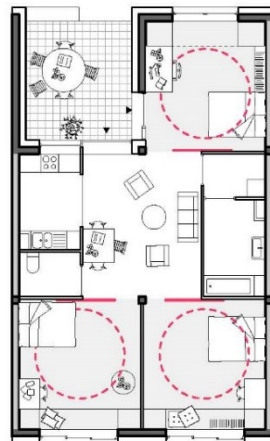
Déploiement du séjour
dans la chambre des enfants



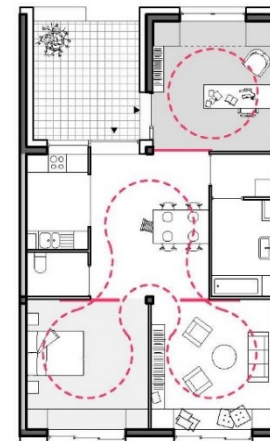
Deux séjours isolés



Co-working



Co-living



Travail à domicile

Interprétation



Interprétation















Partage





100 logements

300 pièces

3

Munich - DE
100 logements

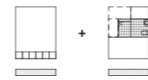
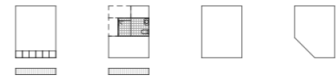
300 habitants

300 pièces de 20 m²

1 logement : 3 pièces

1 pièce : 3,6 m x 5,5 m

LA PYRAMIDE DE TYPOLOGIES




Type 1
 36 m²
 + 5 m²
 balcon




Type 2
 54 m²
 + 5 m²
 balcon




Type 3
 72 m²
 + 5 m²
 balcon




Type 4
 90 m²
 + 5 m²
 balcon

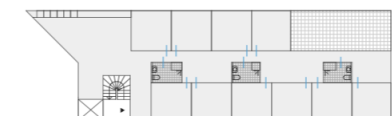
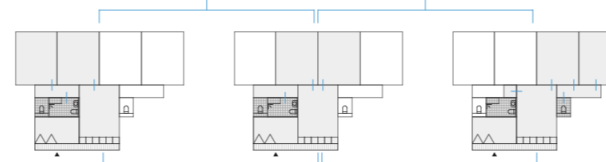
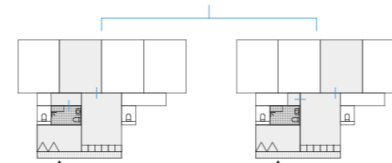


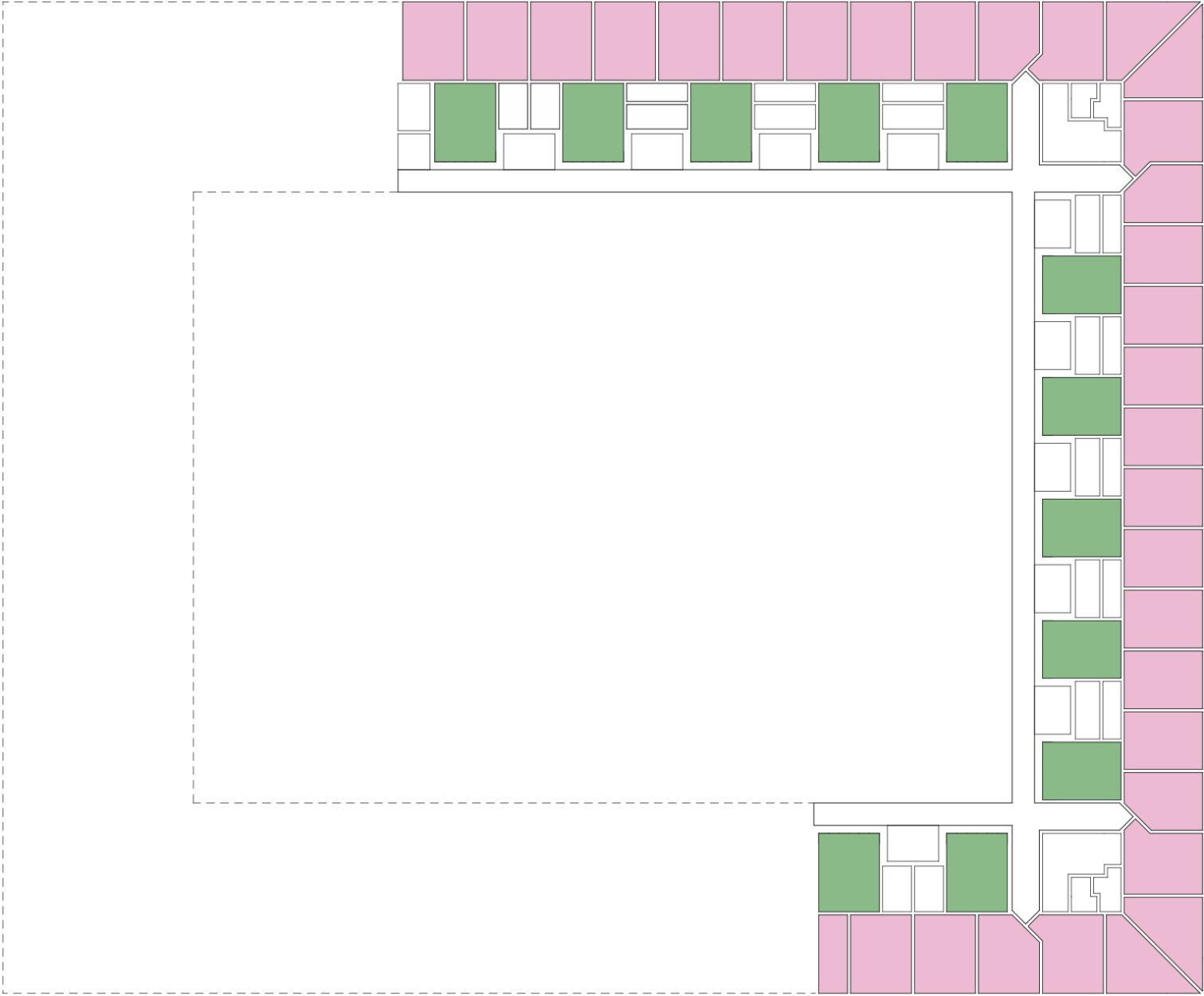

Type 5
 110 m²
 + 5 m²
 balcon

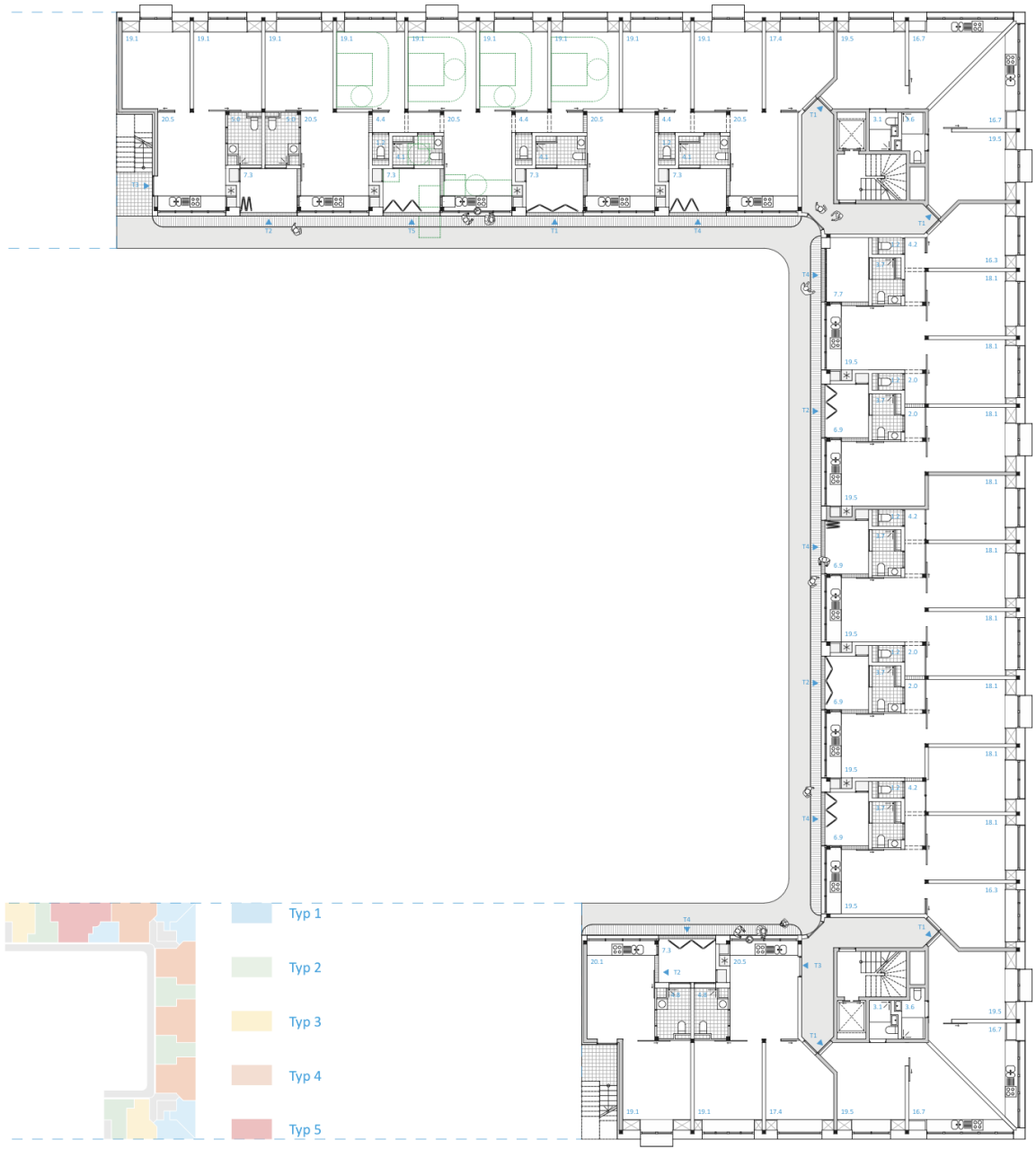



Type Wg
 250 m²
 + 35 m²
 terrasse

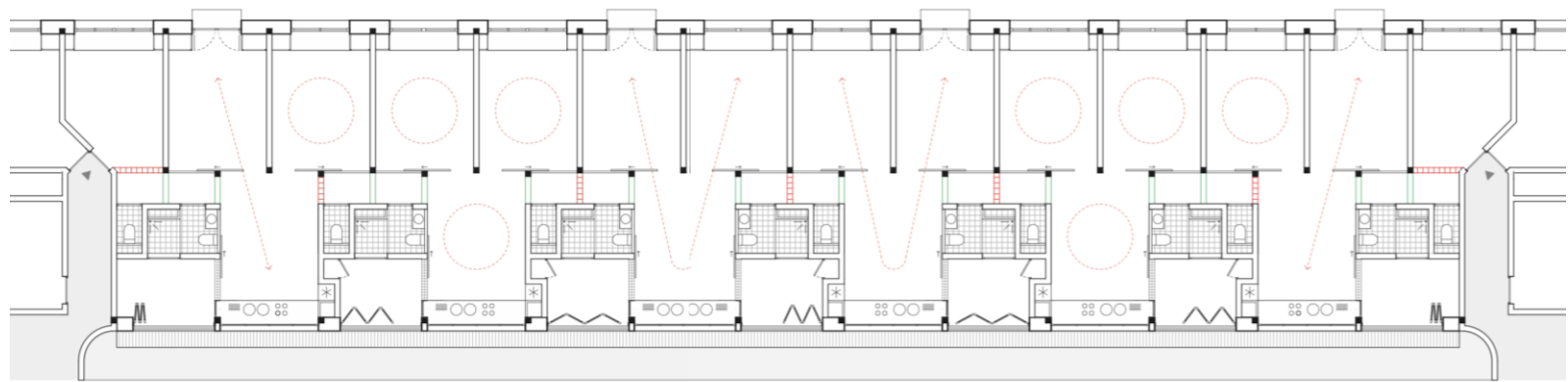
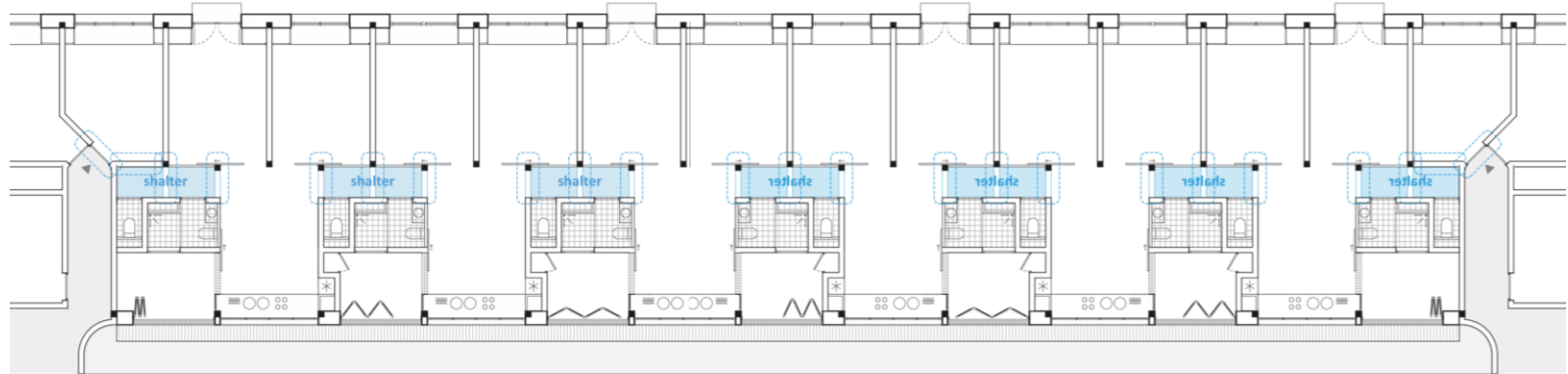
L'ARBRE GÉNÉALOGIQUE DE TYPOLOGIES

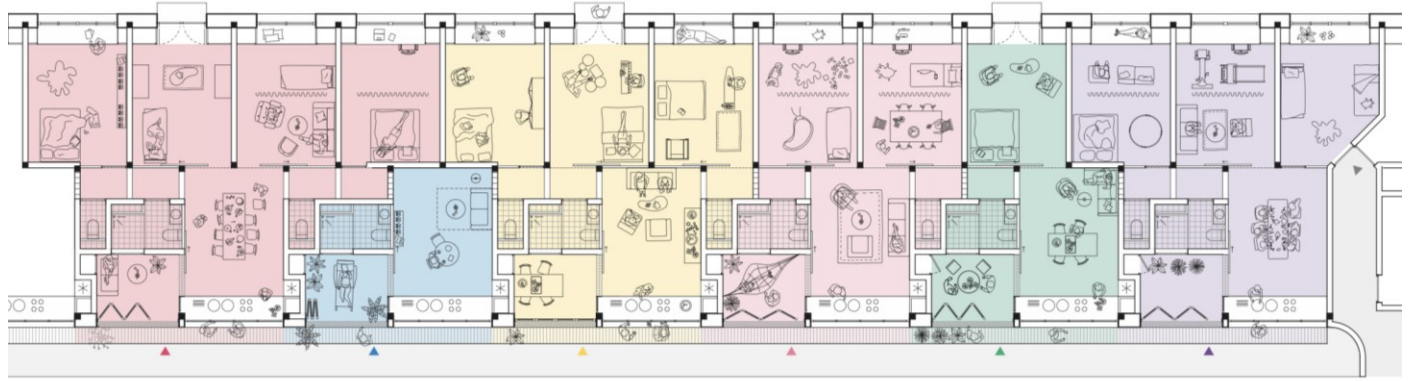






- Typ 1
- Typ 2
- Typ 3
- Typ 4
- Typ 5

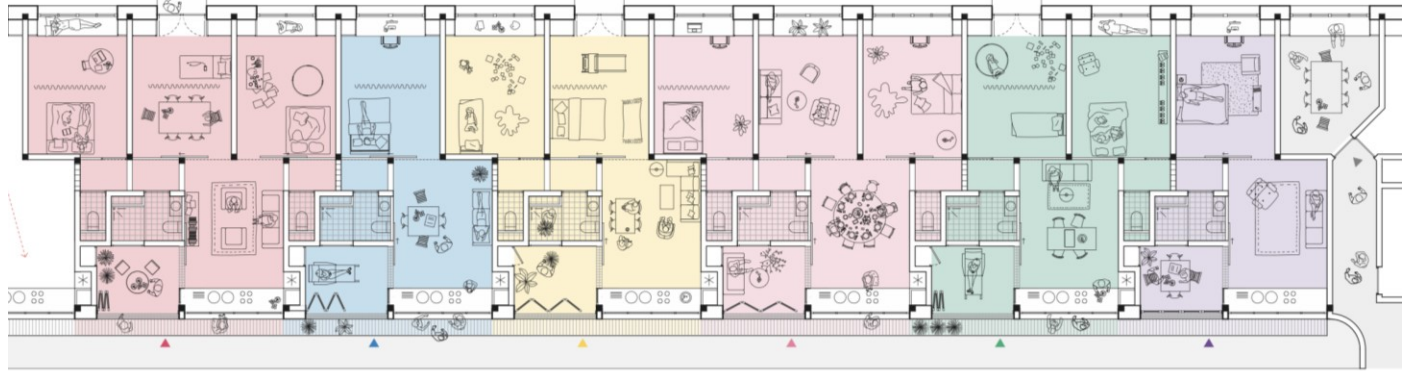


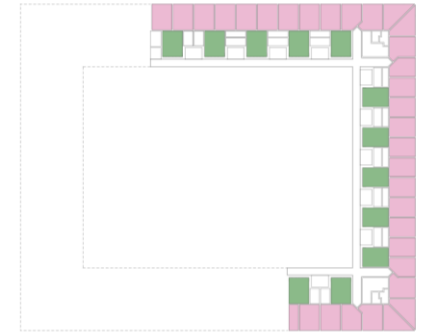
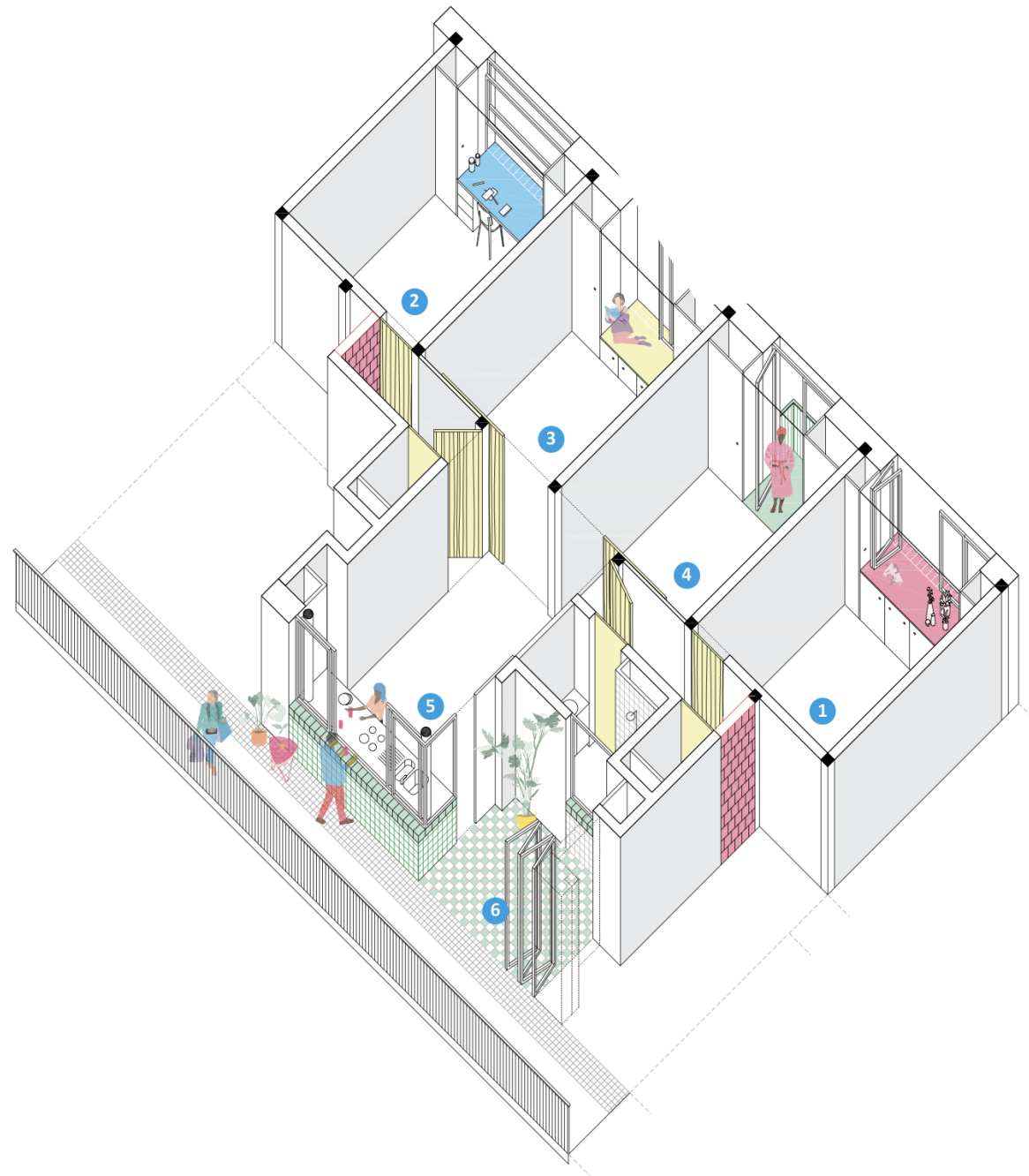


Type 4
 Type 1
 Type 4
 Type 3
 Type 2
 Type 4

↕
 ↕
 ↕
 ↕
 ↕
 ↕

Type 4
 Type 2
 Type 3
 Type 4
 Type 3
 Type 2

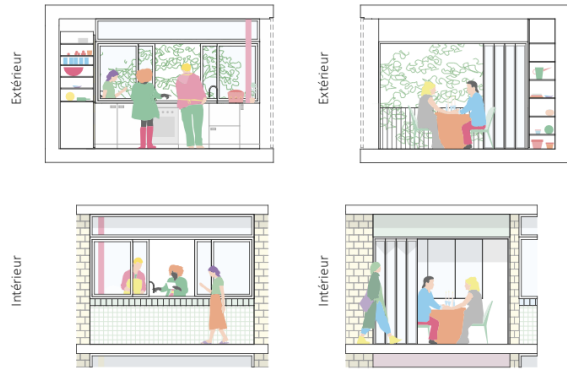






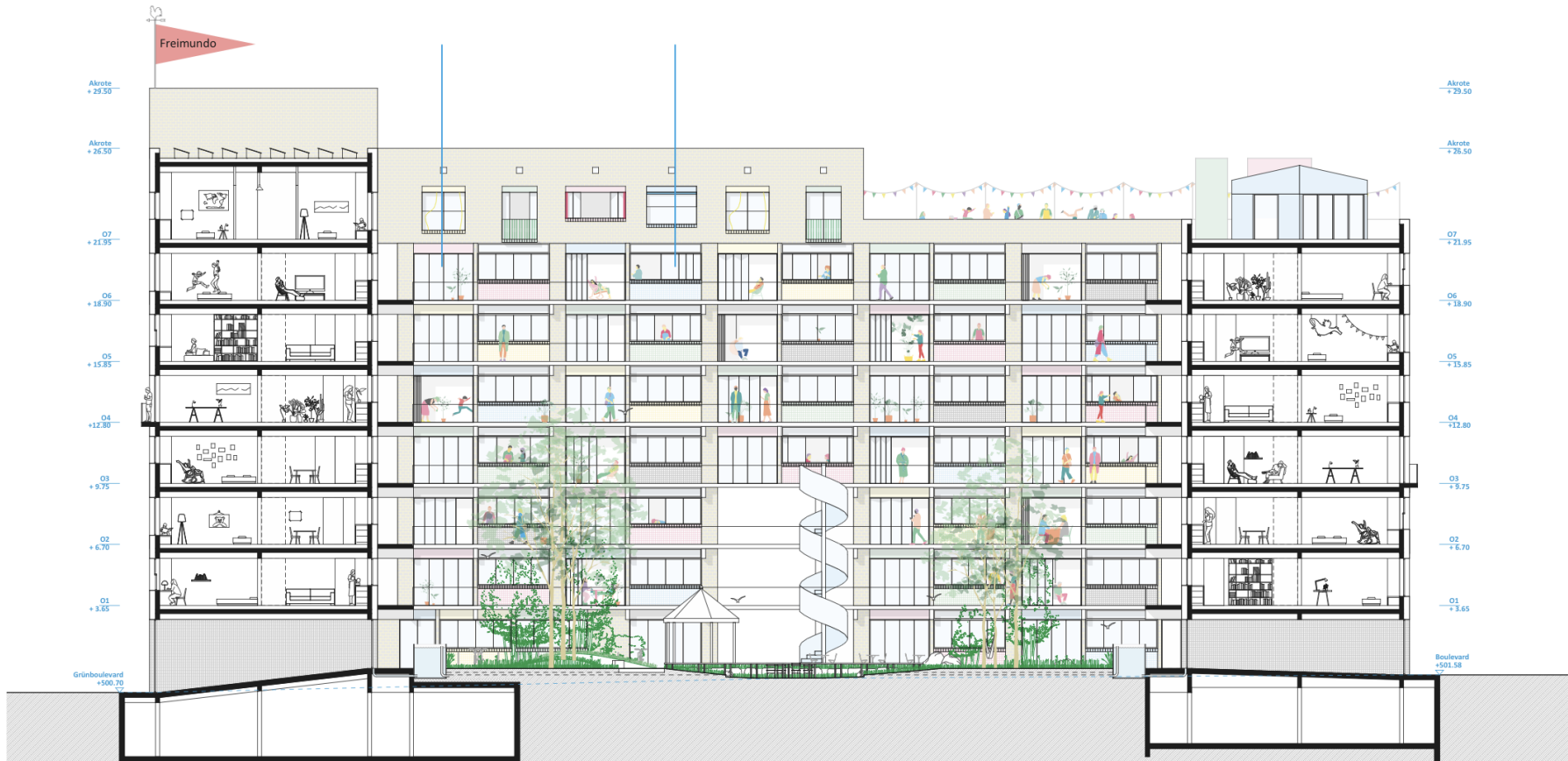
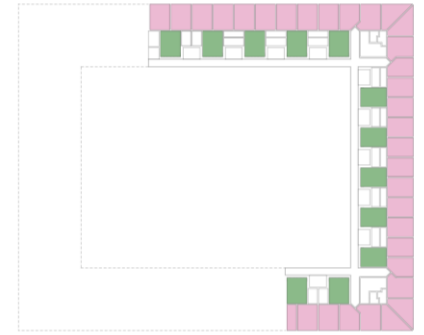


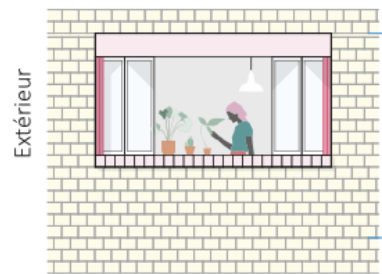




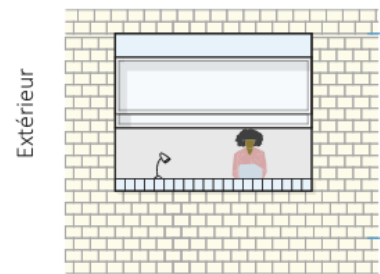
cuisine intime ou commune
Cuisine-bar utilisable des deux côtés.
Fenêtre coulissante.

loggia d'entrée privée sur
laquelle s'ouvre la salle de bains
Rideau textile.

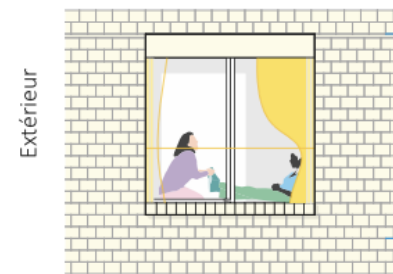




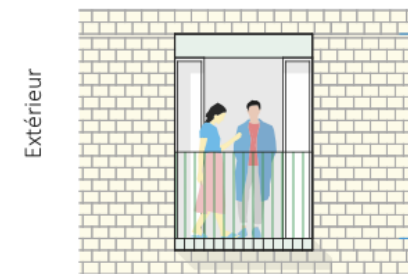
Penderies et rangements.
Fenêtres en accordéon.



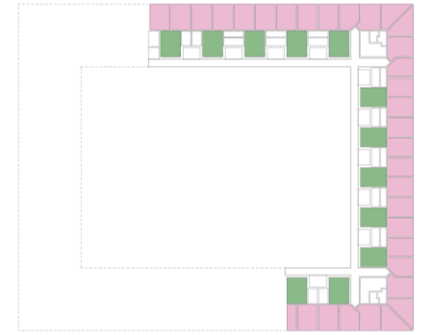
Penderies et bureau.
Fenêtre à battant.

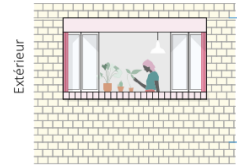


Penderies et coffre
Fenêtre coulissante.

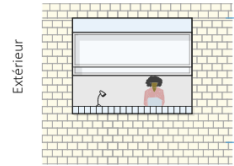


Armoire à vêtements double.
Fenêtres à la française.

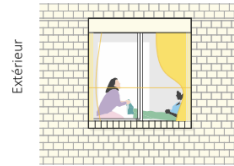




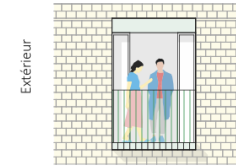
Penderies et rangements.
Fenêtres en accordéon.
Volets extérieurs



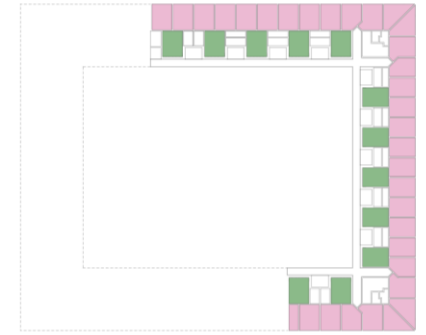
Penderies et bureau.
Fenêtre à battant.
Store extérieur.



Penderies et coffre
Fenêtre coulissante.
Rideau textile



Armoire à vêtements double.
Fenêtres à la française.
Balcon de 50 cm.
Store fixe



3/16





*Cent mille milliards de poèmes,
Raymond Queneau, 1961
Membre du mouvement OuLiPo : Ouvroir de Littérature Potentielle*

“ At each communal meals, we invite freedom to sit down.
The place remains empty, but the table remains set ”

Feuillets d'Hypnos, Fureur et mystère, René Char; 1943

“ A tous les repas pris en commun, nous invitons la liberté à s'asseoir.
La place demeure vide mais le couvert reste mis ”

Feuillets d'Hypnos, Fureur et mystère, René Char; 1943

merci