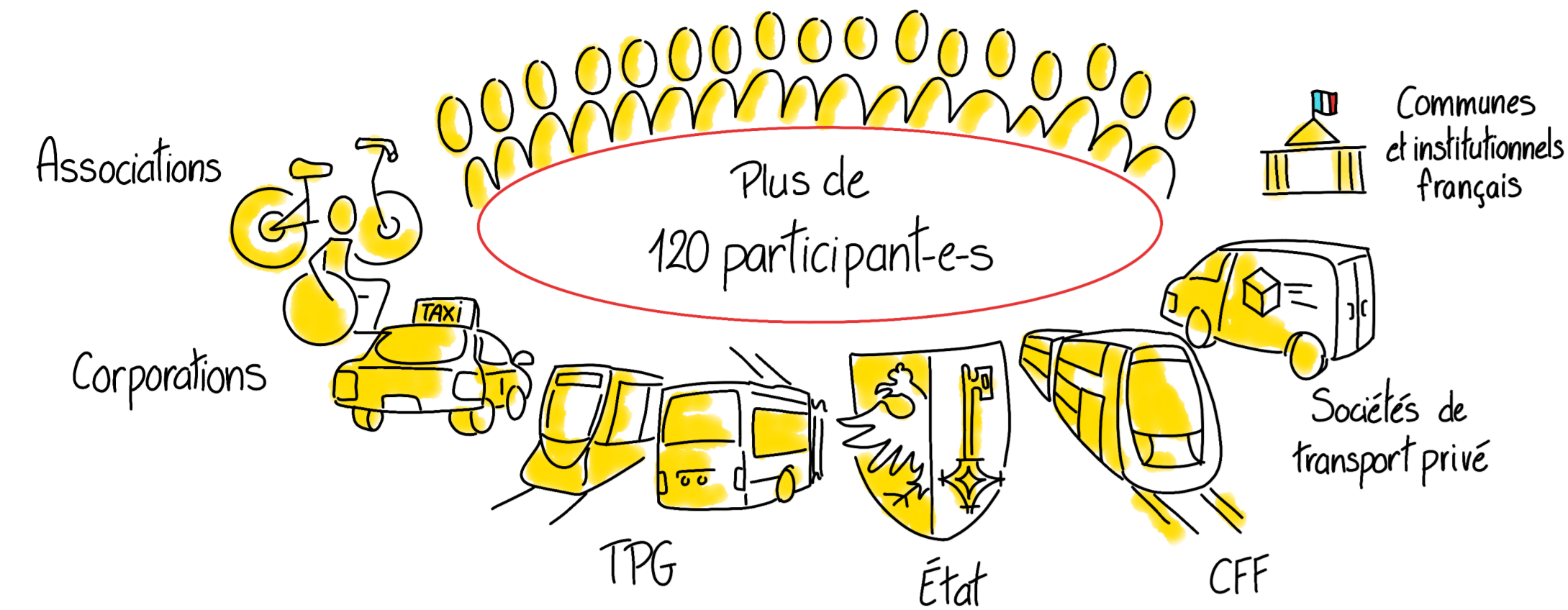


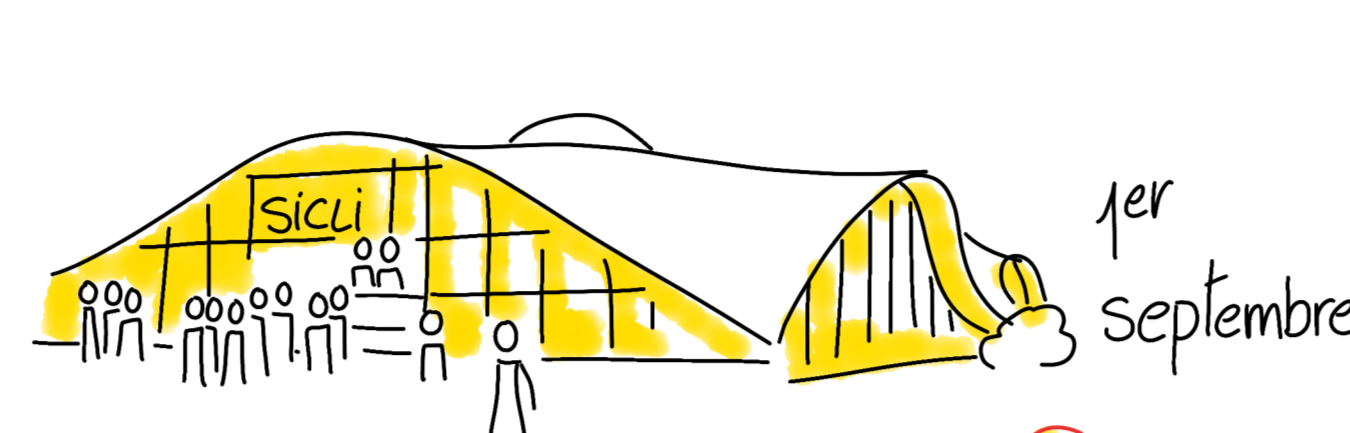
ÉTATS GÉNÉRAUX DES MOBILITÉS

Département de la santé et des mobilités

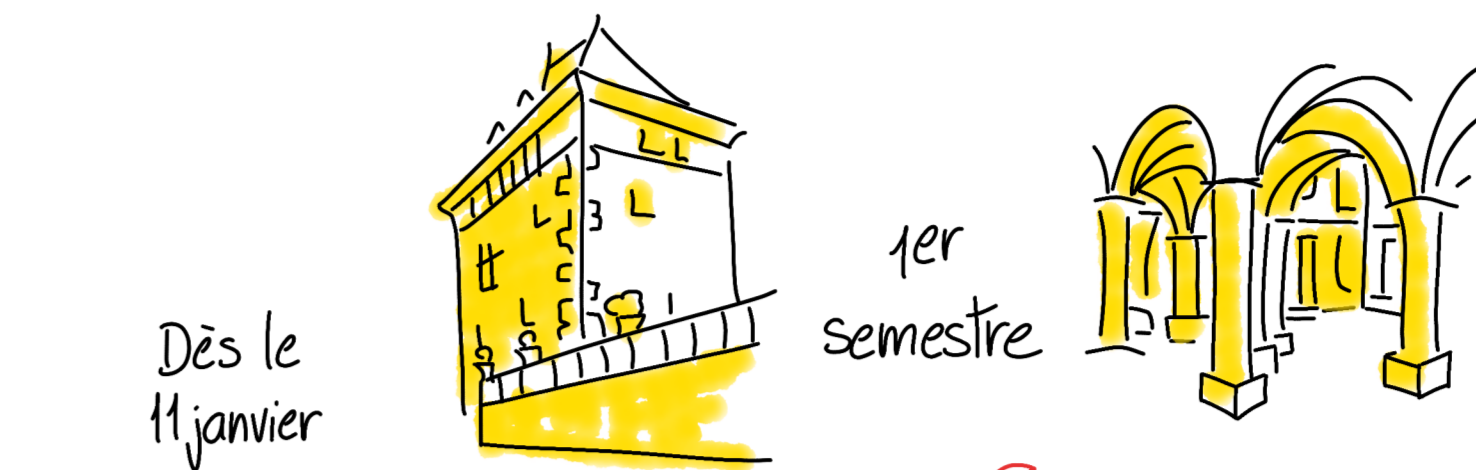
Une démarche consultative



2023



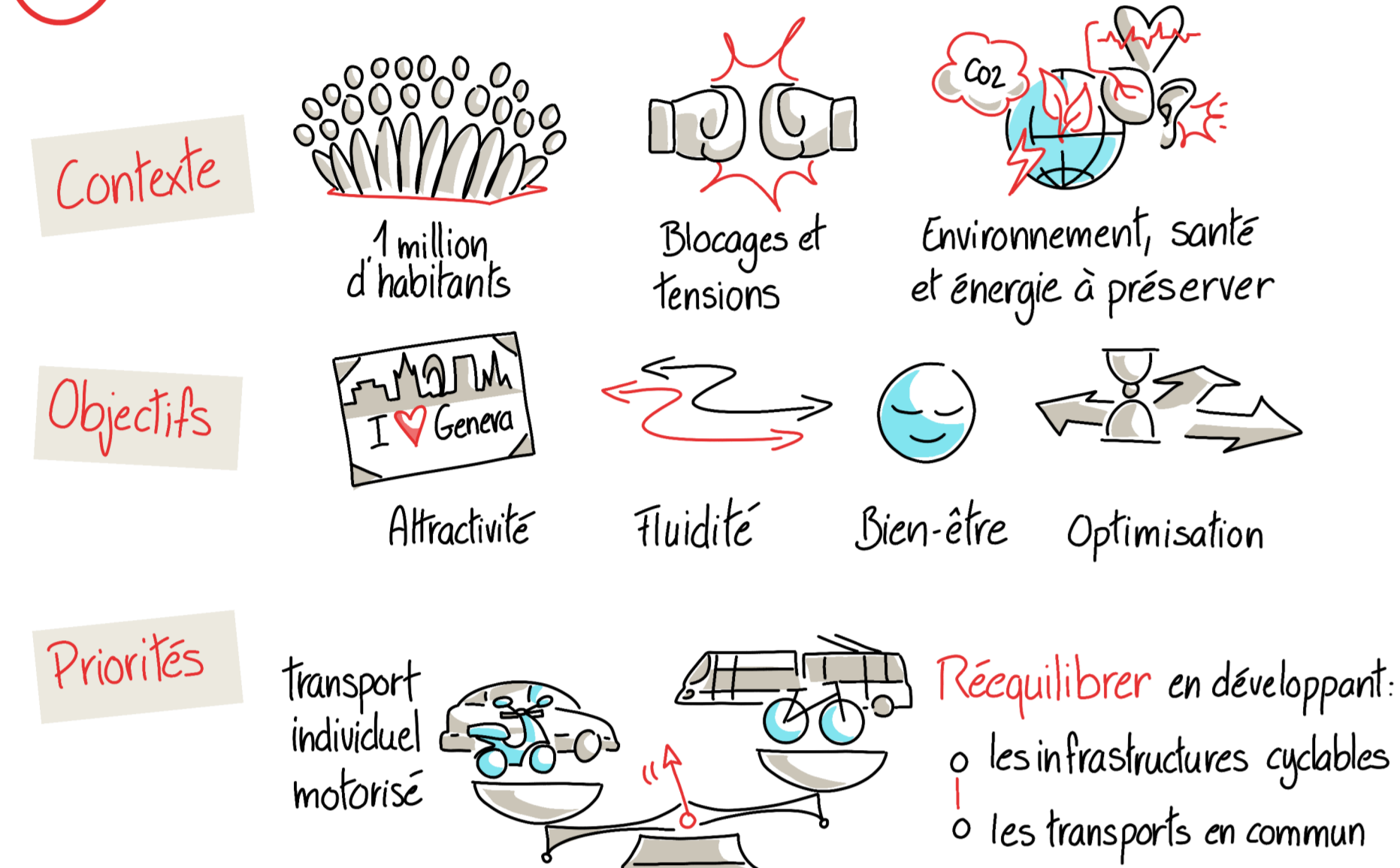
2024



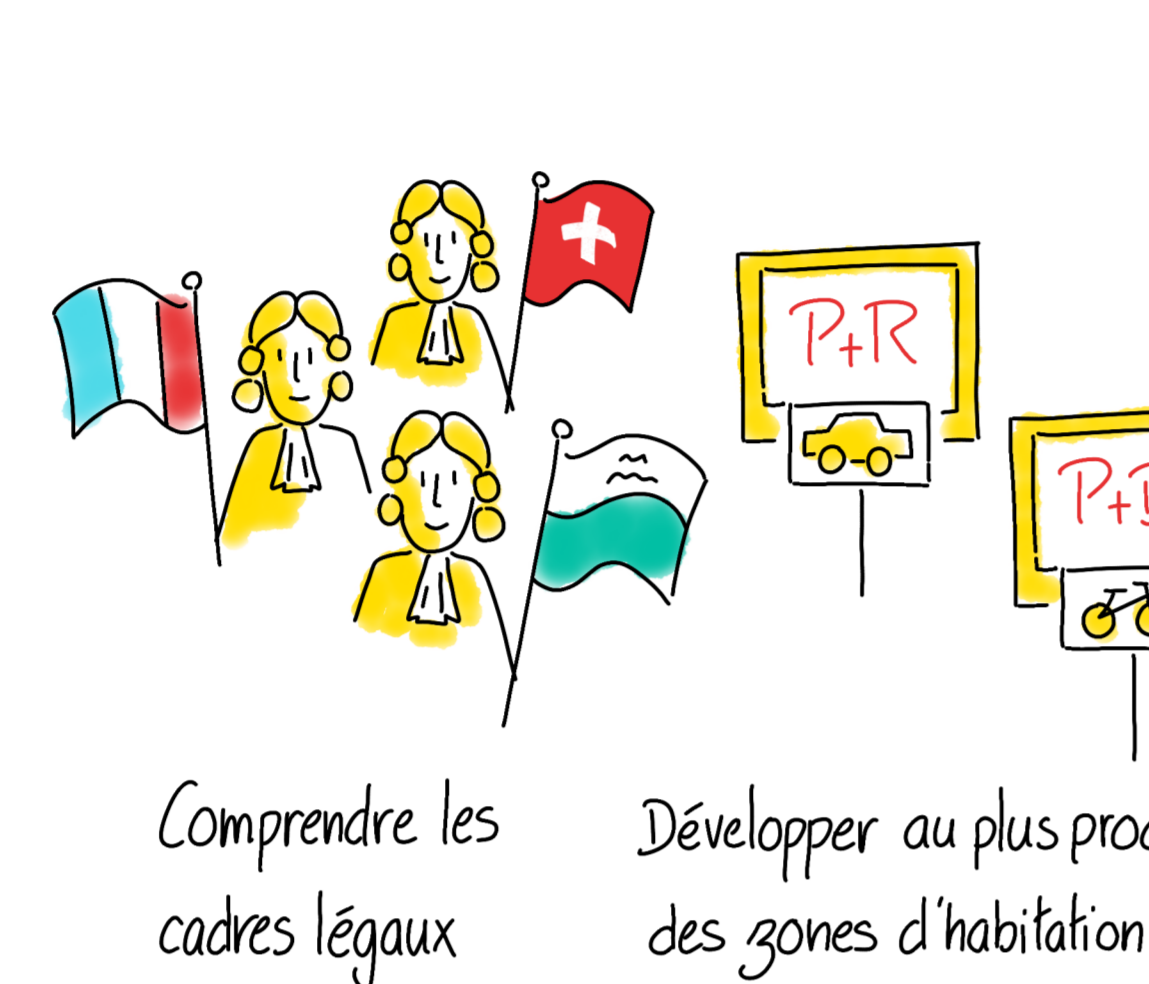
ATELIERS

CONVERGENCES ISSUES DES ATELIERS

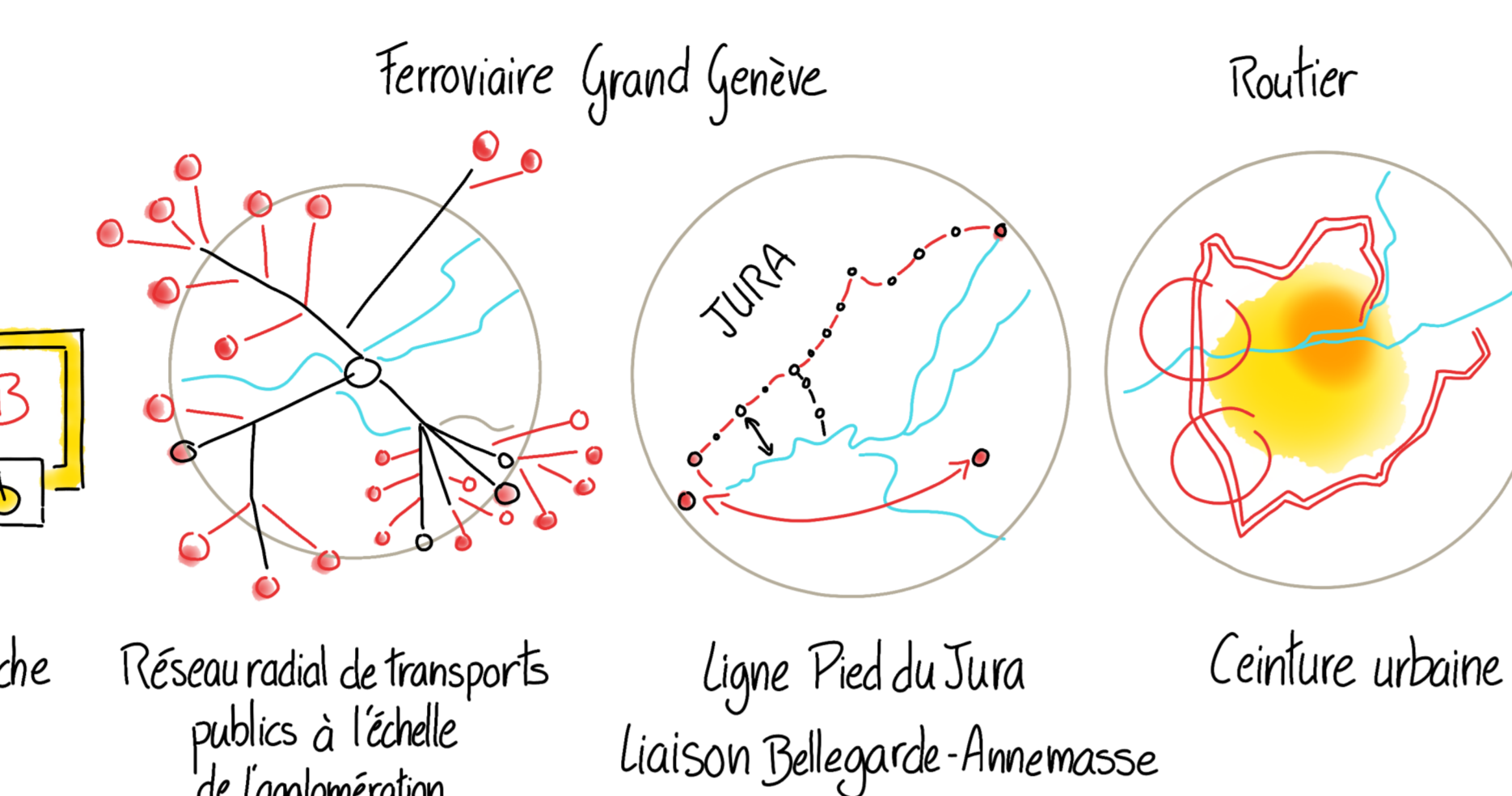
① MISSIONS



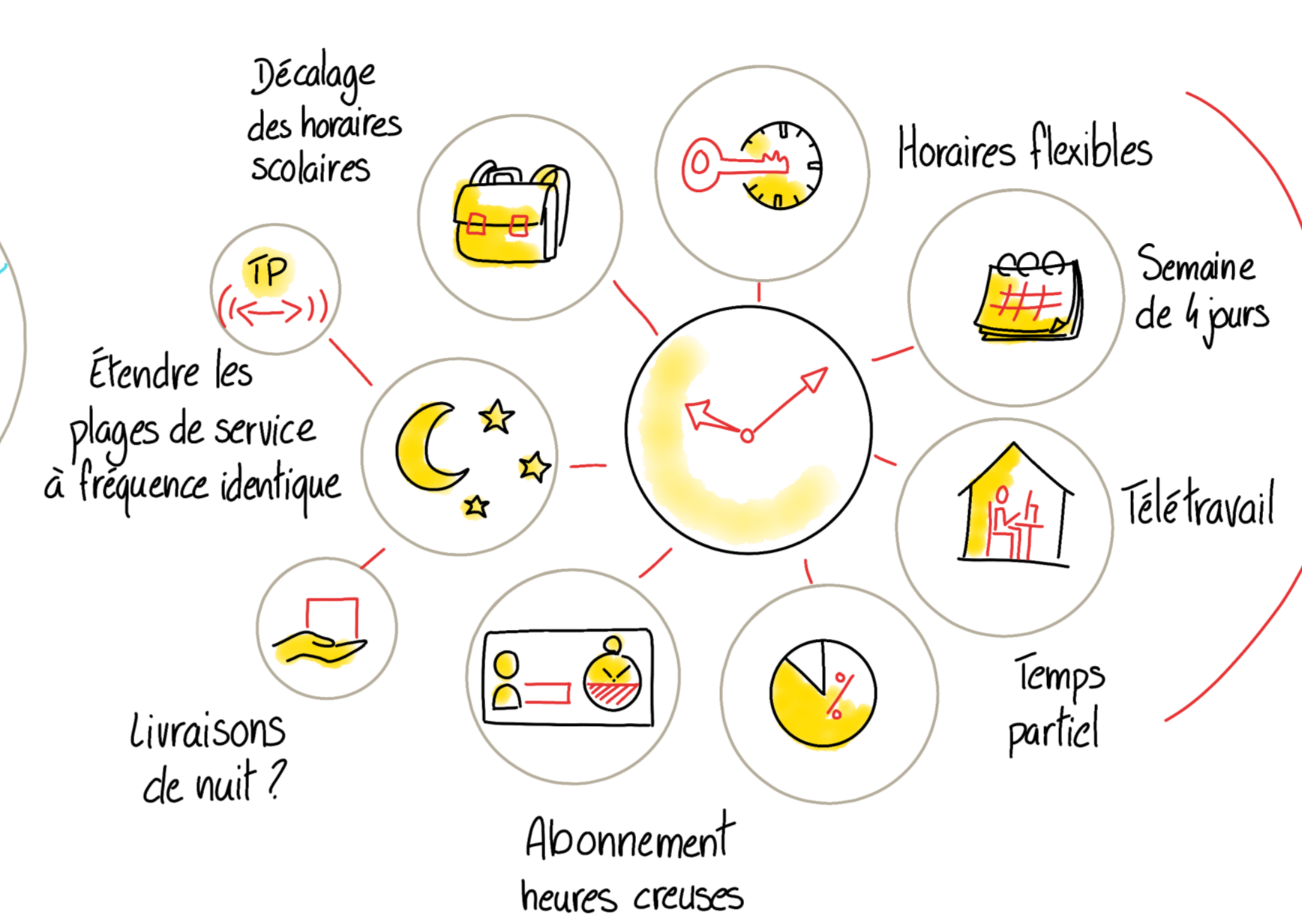
VISION TRANSFRONTALIÈRE



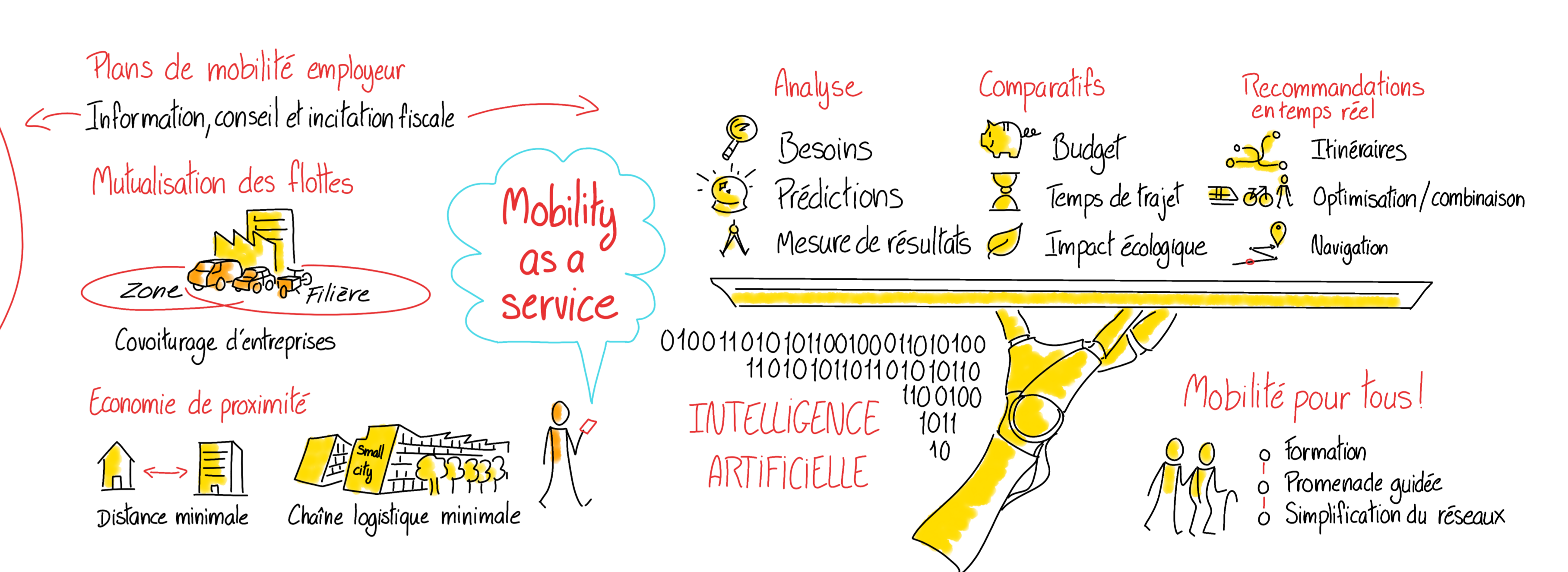
DÉVELOPPEMENT DU RÉSEAU



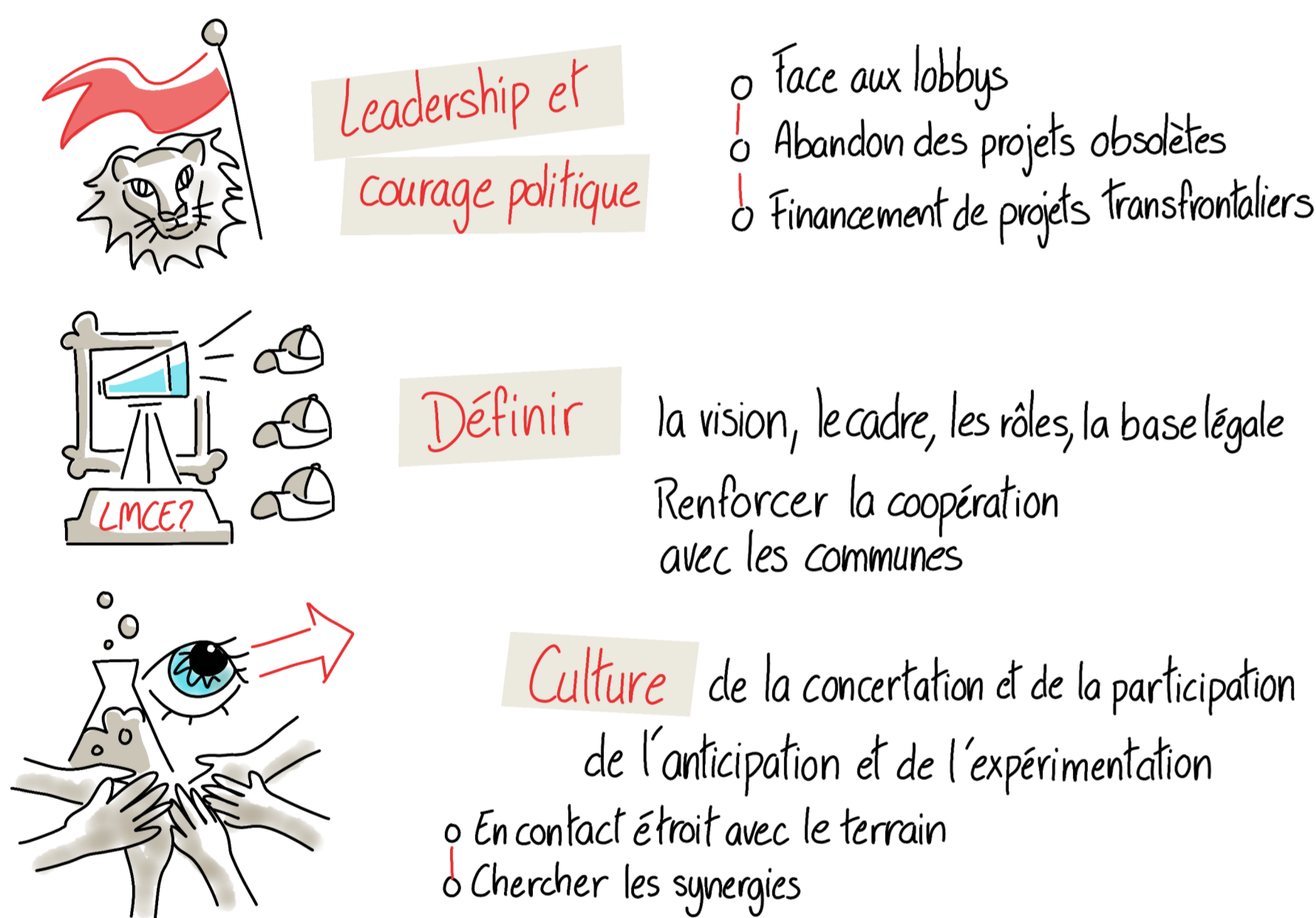
STRATÉGIE HORAIRE



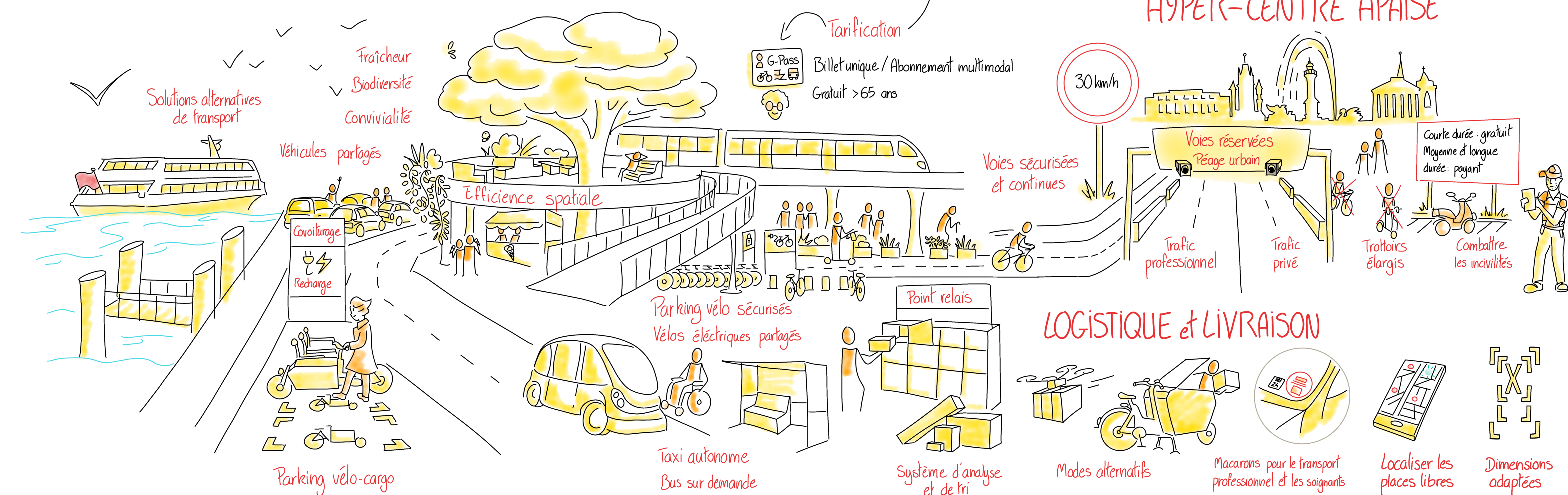
ACCOMPAGNER CITOYENS ET ENTREPRISES



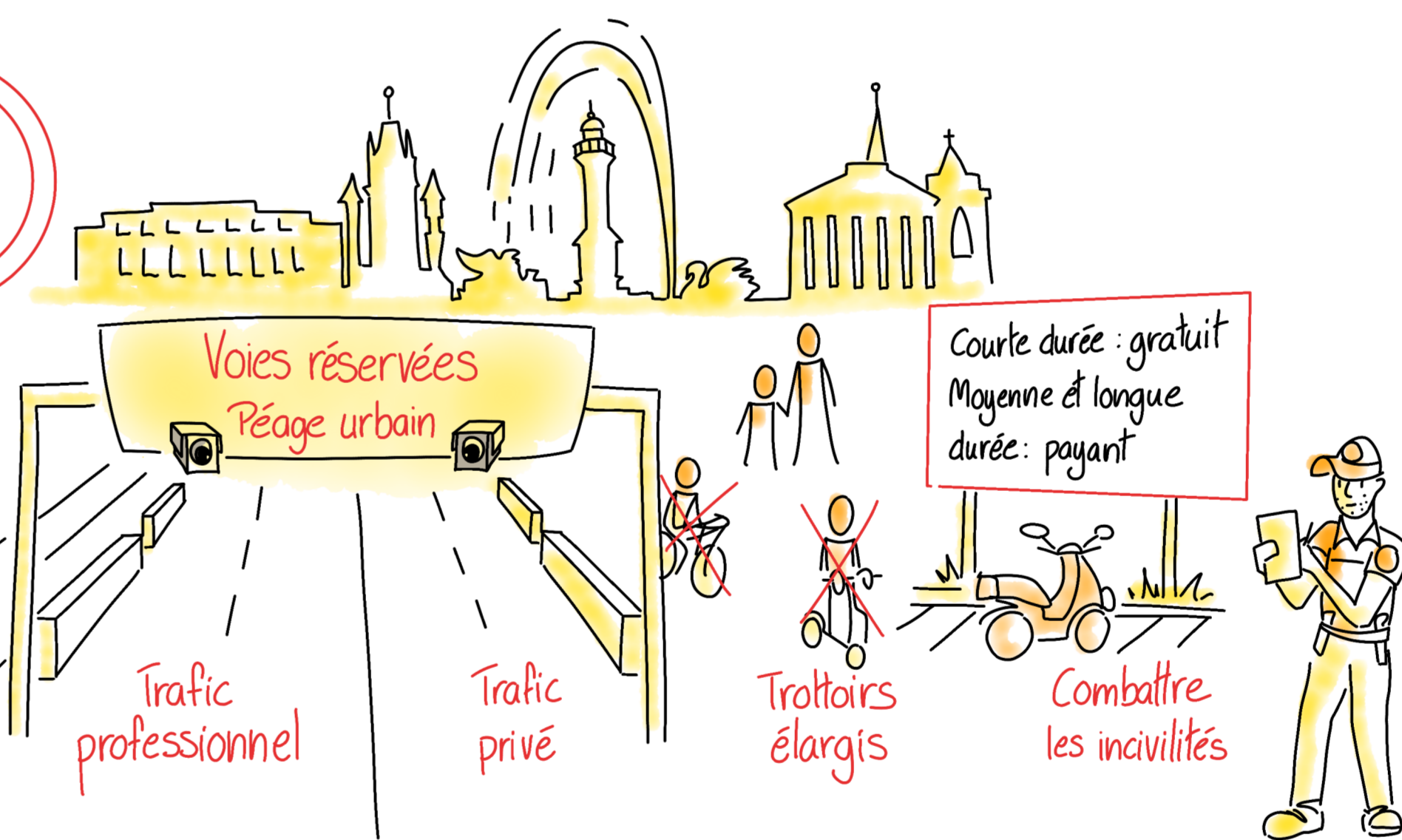
② PILOTAGE



HUBS et NANO-HUBS MULTIMODAUX



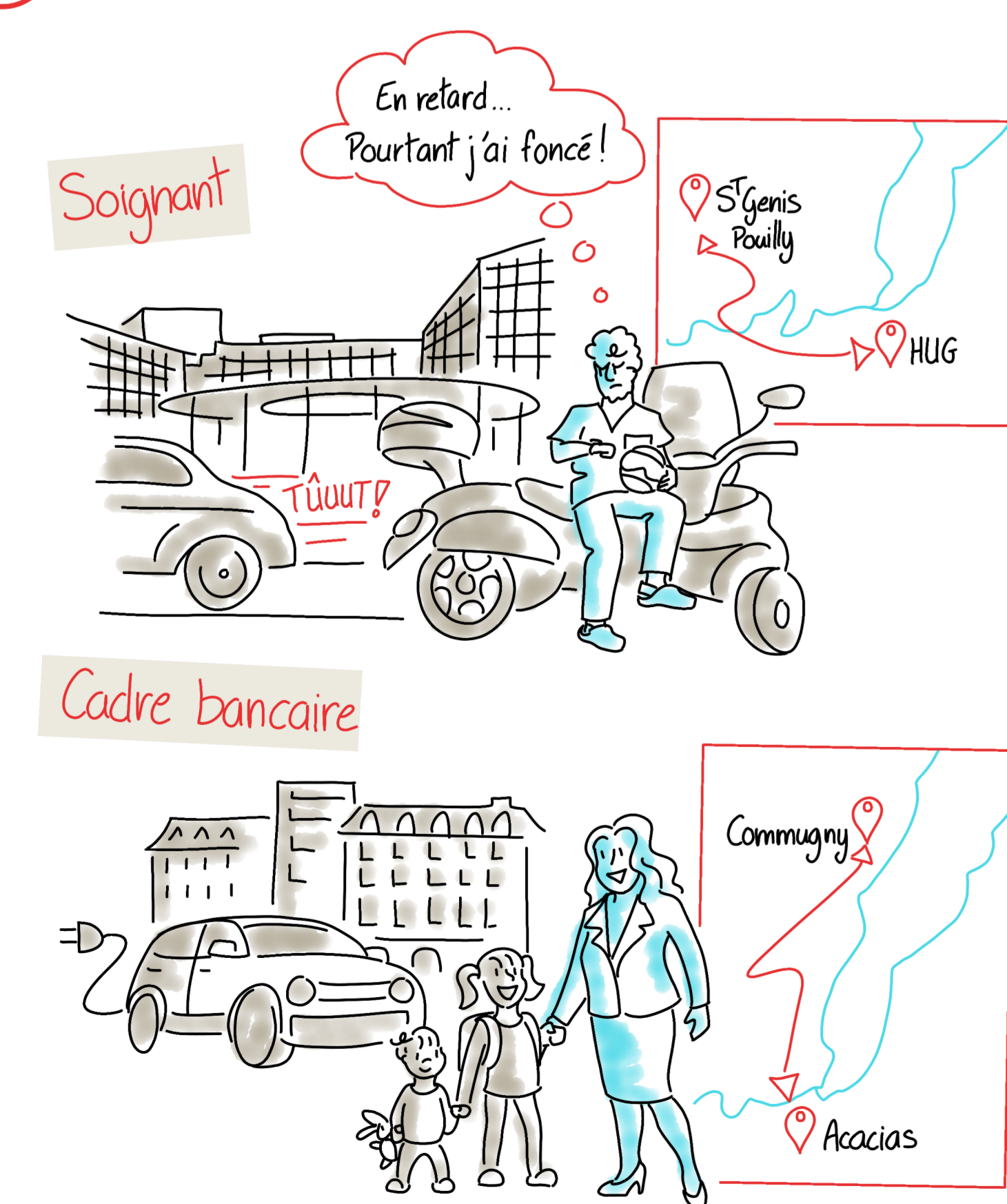
HYPER-CENTRE APAISÉ



LOGISTIQUE et LIVRAISON



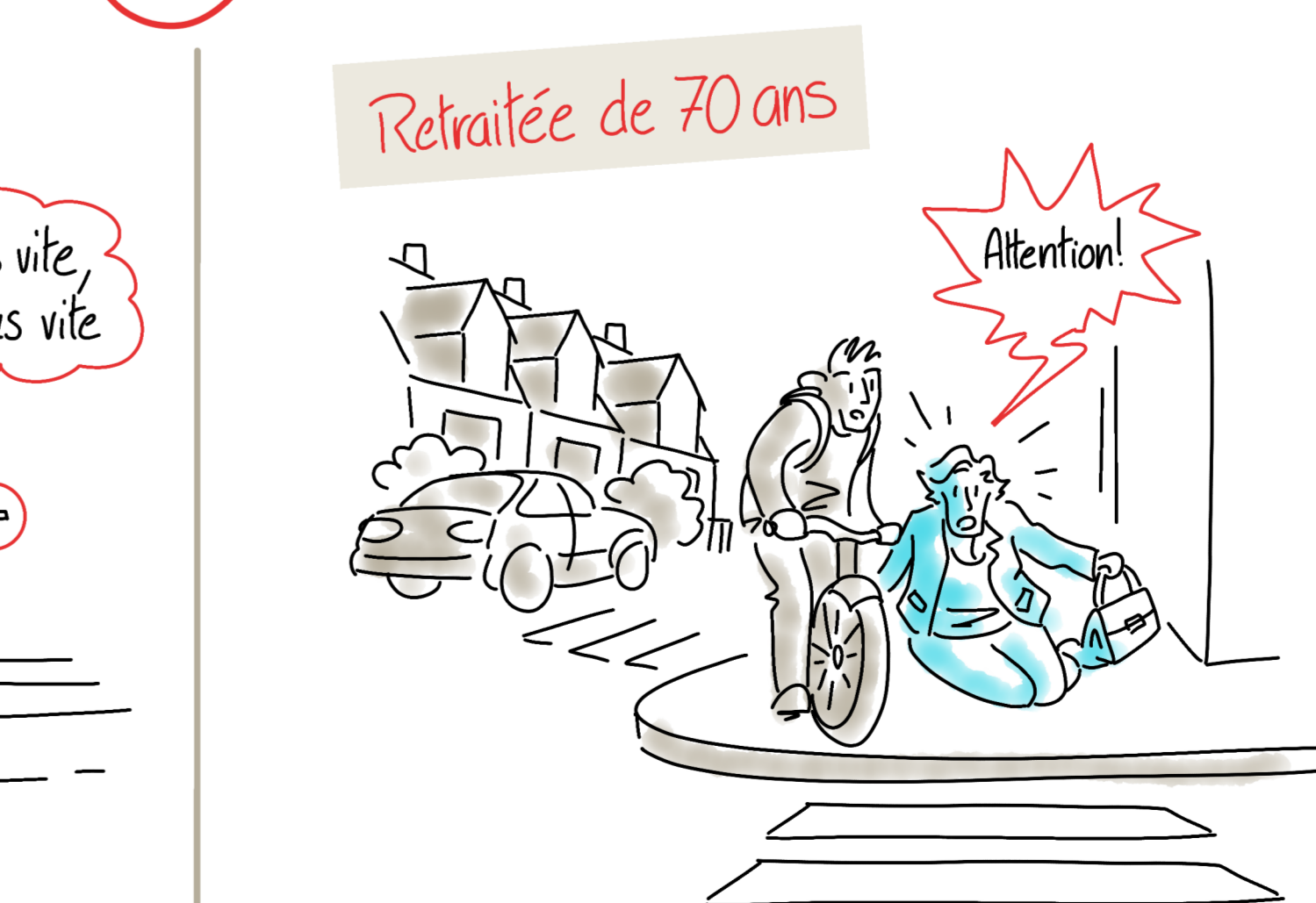
③ PENDULAIRES



④ ÉCONOMIE



⑤ SANTÉ



⑥ INNOVATIONS

