

it's  
easy to  
get  
it right



# glass goes in here



To be sorted for recycling  
jars, bottles



GLASS

To be thrown in the bin  
in small quantities\*: sheet glass, mirrors,  
broken crockery and porcelain,  
'standard' and halogen light bulbs

*\* in large quantities, take to a waste recycling centre (ESREC)*

# paper goes in here



## To be sorted for recycling

newspapers, magazines, printer  
paper, envelopes, sheets of paper,  
cardboard, packaging

PAPER CARDBOARD



## To be thrown in the bin

tissues, paper napkins/tablecloths,  
dirty paper/cardboard, pizza boxes,  
stickers, milk/fruit juice cartons

# kitchen waste goes in here



KITCHEN WASTE

To be sorted for recycling  
fruit and vegetable peel,  
leftover food, coffee grounds,  
fish and meat bones,  
egg shells, wilted flowers

To be thrown in the bin  
used frying oil (in a plastic bottle),  
pet litter, sweepings, plastic tea bags

tips for sorting kitchen waste →

# get into the habit of the little green bin!

Only use **compostable bags** with the wording OK COMPOST (EN13432) and empty the green bin **every 2-3 days!**

**Feel free to throw out your bag even if it's not full!**

Throwing out a half-full bag is better for the environment than putting kitchen waste in the black bag.  
It's worth sorting your waste, even if you don't cook much!

The Little Green Bin and compostable bags are available free of charge in **many municipalities** or at the **GESDEC** and **GE-Environnement** counters.

find all the details on [poubelleverte.ge.ch](http://poubelleverte.ge.ch)

# 5 good reasons to sort your waste

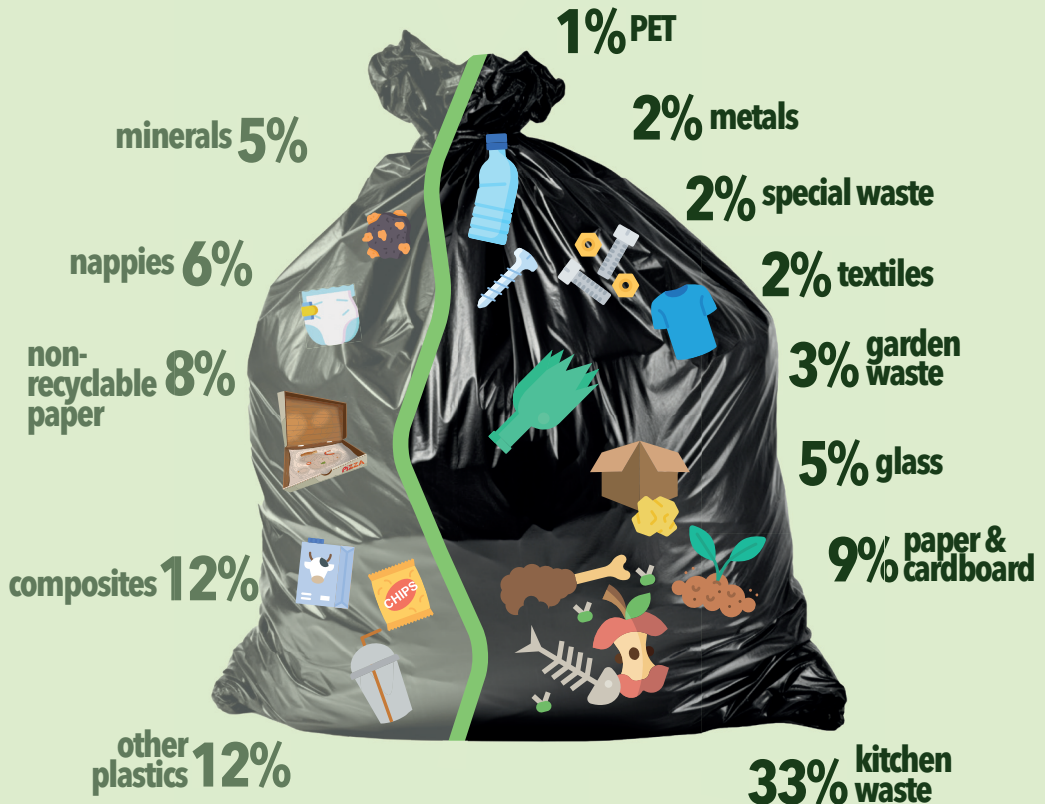
Our waste is a precious resource! Let's sort our waste better in order to:

- **Preserve natural resources**
- **Save energy:** manufacturing objects (bottles, paper) using recycled materials requires less energy than if they're produced from raw materials.
- **Avoid wasting water:** kitchen waste is 90% water! When sorted, it produces compost, good quality fertiliser, and biogas.
- **Supply electricity to households in Geneva:** sorting kitchen and garden waste provides power to around 100 households in Geneva!
- **Take pressure off our landfill sites:** some waste cannot be incinerated – when thrown in the bin, it ends up in landfill.

# more than 50% of the content can be recycled

## non-recyclable waste

## recyclable waste



# what about other waste?

Most municipalities and some shops have containers to collect **aluminium** and **tin plate** and **PET**.

**Textiles** in good, clean condition can be put in collection containers or donated directly to charity.

**Batteries** and **special waste** (medicines, leftover paint, cleaning products, energy-saving/LED light bulbs) must be returned to where they were purchased.

**Electrical appliances** and **electronic devices** can be returned to shops free of charge or taken to a cantonal waste recycling centre (ESREC).

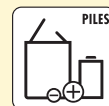
**Bulky waste** must be put out for the municipal collection.

**Garden waste** must be composted by you or put out for the municipal collection.

**Milk bottles** and **plastic bottles** may be taken back to shops that accept them.



TEXTILES



BATTERIES  
ELECTRICAL  
EQUIPMENT



SPECIAL WASTE  
OFFICE  
ELECTRONICS



MATERIEL  
ELECTRIQUE



ÉLECTRONIQUE  
DE BUREAU



DÉCHETS  
ENCOMBRANTS

BULKY WASTE



DÉCHETS DE JARDIN

GARDEN WASTE



PE



# waste recycling centres (ESREC)

Individuals can drop off their household waste at one of the three waste recycling centres (ESREC):

**1. Châtillon site, Bernex**

**2. La Praille, Carouge**

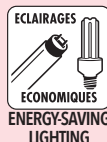
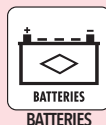
**3. Les Chânats, Bellevue**

The opening hours vary depending on the season

Find out more at: **[trionsmieux.ge.ch](http://trionsmieux.ge.ch)**

The Mobilitri mobile waste collection travels around the northern municipalities and takes the same types of waste.

Waste recycling centres (**ESREC**) accept:



the municipalities and the State of Geneva

**trionsmieux.ge.ch**

for more information



find us on our GE-Environnement social networks

