

VACCINATION : 1 OR 2 DOSES ?



After a documented COVID-19 disease,* for healthy or vulnerable people, a single dose between 4 weeks and 3 months after infection is sufficient for effective protection.

A second injection is nevertheless recommended for immuno-suppressed persons.

For more information, ask your GP, your pharmacist or the medical staff at your vaccination centre.

** COVID-19 disease is proven by a COVID-19 test (PCR or antigen only) or serological analysis (anti-SARS-CoV-2 IgG antibodies) before or directly after the first dose (< 2 weeks).*

Vulnerable people

People aged 65+

People affected by one or more of the following conditions:

Heart diseases

You have a heart condition and, despite medication, you have breathing difficulties or chest pain.

High blood pressure

You are taking medication to treat high blood pressure, but your blood pressure regularly exceeds 160 mmHg.

You have stabilised high blood pressure but breathing difficulties or severe kidney disease.

Respiratory diseases

You have a very severe lung disease, for instance, pulmonary fibrosis or a severe form of chronic obstructive pulmonary disease (COPD).

If it is well controlled with medication, asthma is not a high-risk condition.

Liver disease

You have liver cirrhosis and have already had ascites or oesophageal varices, or hepatic encephalopathy.

Kidney disease

Your kidney function is significantly limited.

Diabetes

You have a severe form of diabetes, which does not allow you to control your blood sugar level sufficiently or causes illness in other organs.

Obesity

You are seriously overweight (BMI > 35 kg/m²).

Other

You have trisomy 21.

Immuno-suppressed people

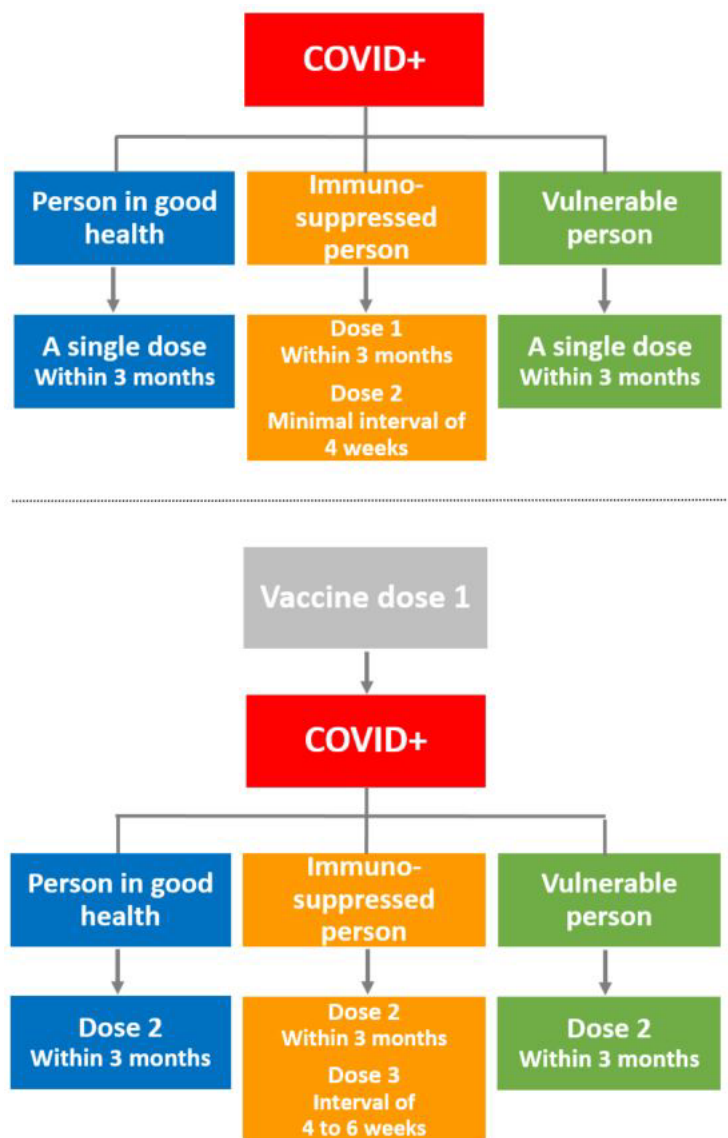
You have a congenital or acquired immunodeficiency due to an immunosuppressive disease or treatment.

You have a severe form of one of the following inflammatory diseases and are receiving medications that block the immune system: systemic lupus erythematosus, severe inflammatory joint disease (rheumatoid arthritis), psoriasis (severe), chronic inflammatory bowel disease (e.g. Crohn's disease, ulcerative colitis).

You are infected with HIV and the disease is not currently well controlled (CD4+ < 200 µl).

You have had an organ transplant and are therefore taking medication that inhibits the immune system, or you are waiting for such a transplant.

You are currently being treated for cancer, including blood cancer (leukaemia).



www.ge.ch/c/covid19-vaccin



REPUBLIQUE
ET CANTON
DE GENEVE

POST TENEBRAS LUX